



Mediline Partition System

Workspace redefined



NORWOOD QATAR LLC
Steel Solution



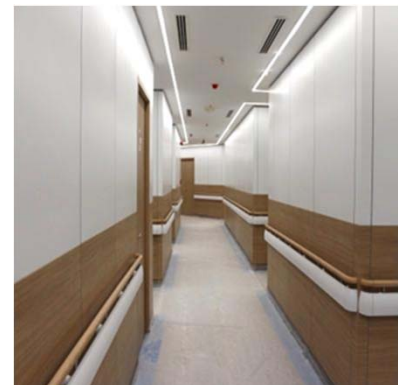
Demountable Partition System

Produces bespoke modular, demountable & fully re-locatable partition

The company produces bespoke modular, demountable and fully relocatable architectural partition solutions using its cutting- edge Qatari manufacturing facility. All bespoke partitions are manufactured & delivered direct to site, pre-configured to minimise disruption. A wide range of colours, materials & finishes are available, together with built-in utilities

Special wishes are welcomed.

We are always open to special requests. In fact - we really look forward to them, because our strength is “building new solutions”. With our product developments, for example, we make sure that wood doesn’t burn or that floors are ready to walk on after one day. What else can we do for our customers? Just ask us! We offer development and design in connection with specific project as a service too.



We turn shell constructions into key-ready buildings - from the outside and the inside. (Photo left: Cell Therapy, Qatar; middle: University Library Project, Qatar; right: Physiotherapy Clinic, Qatar.)

Construction

BI-PANEL ELEMENTS

Uprights:
steel sections, 1.2 mm thick.

Thickness:
80mm / 100mm / 200mm

Steel frame:
Galvanized steel studs and cross profiles.

Panels:
12.5 mm plasterboard bonded on reverse of each panel skin..

Internal filler:
Rock wool.

Floor channels:
Recessed / flush steel profiles

Ceiling channels:
Recessed / flush steel profiles

Skirting:
Recessed steel floor tracks

Glass panels:
Double-glazed steel frames, different section forms, Several types and thicknesses of glass available.

Door panels:
Steel frame: 1.2mm thick
Leaf steel: glass or timber, with adjustable base drop seal.

Optional: solid leaf or flush glazed

JUNCTION
6 mm wide. Vinyl or steel seal.

Finish

Skins: Vinyl coated Steel 0.75mm

Colour

Range of plain colors, steel finishes, timber finishes, fabric finishes & stone finishes

Geometrical features

DIMENSIONS

Height: Bi Panel up to 4000 mm.
Width: 1000 mm for solid & glazed panels

Installation features

TOLERANCES

floor: ± 15 mm
ceiling: ± 15 mm

CONNECTION OF PANEL TYPES

The panels skins are friction locked on to the vertical stud giving a 4mm gap between each panel skin

INTEGRATION OF ELECTRICAL AND DATA SERVICES

The top and bottom channels & studs allow the horizontal passage for electric wiring through the partition.

Service panel with removable skins allows the installation and integration of electric switches and power sockets.

Working wall features

WORKING WALL

Solid panel vertical junctions can accommodate a concealed racking upright that facilitates the support of furniture items such as shelving, storage units and desking. The upright can be retrofitted and relocated if required.

OPTION: INSERT PANELS

The insert panel design option allows various finishes to be installed into the wall face. The panel finish can be of steel painted/perforated, timber, fabric or leather.

Use

Whiteboards, drawings, pinboards, presentation material etc. magnetically fixed to the partitions.

The vinyl coated finish of the partitions means they can be cleaned easily by using a rubber squeegee and a mild detergent.

Acoustics

WEIGHTED AIRBORNE SOUND REDUCTION INDEX

Double glazed panel (80mm):
Rw (C; Ctr) = 39 (-1;-5) dB

Solid panel (80mm):
Rw (C; Ctr) = 38 (-2;-8) dB

Solid panel (80mm):
Rw (C; Ctr) = 45 (-4;-11) dB
(with packed voids)

Solid panel (100mm):
Rw (C; Ctr) = 43 (-2;-7) dB

Solid panel (100mm):
Rw (C; Ctr) = 46 (-2;-7) dB
(with 75mm rockwool)

Solid panel (100mm):
Rw (C; Ctr) = 48 (-9;-9) dB
(with 60mm rockwool & RS 80 universal slab)

Solid panel (200mm):
Rw (C; Ctr) = 54 (-1;-6) dB
(with 160mm rockwool RWA45 insulation)

Further enhancements can be made to increase the sound reduction index, guidance can be given on request.

Fire

SURFACE SPREAD OF FLAME:
BS 476-7 to class 0

FIRE RESISTANCE

Dependent on design characteristics up to:

Solid panel (100mm): 60 minutes
Solid panel (100mm): 90 minutes
Solid panel (200mm): 120 minutes

Double glazed (100mm): 60 minutes
Triple glazed (200mm): 90 minutes

Steel Doors: 90 minutes

In accordance with BS Test standards.

CERTIFICATIONS



Fire Resistance

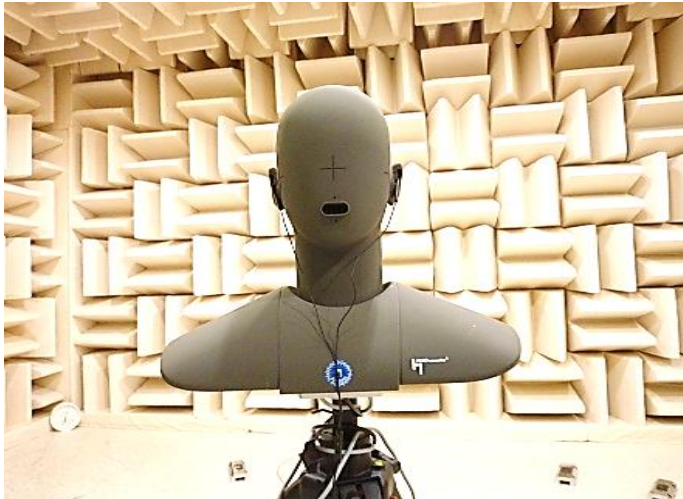
Solid Partitions

100mm from 60 minutes
up to 90 minutes .

200mm from 90 minutes
up to 120 minutes

Glazed Partitions

100mm up to 60 minutes.



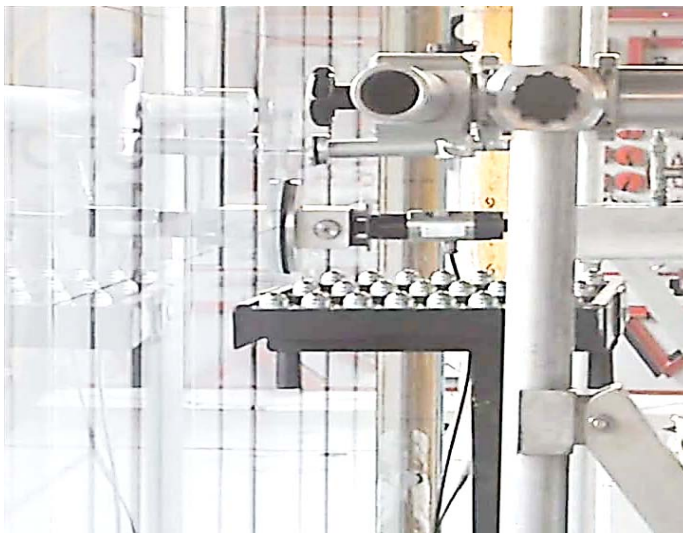
Acoustics

Solid Partitions

80mm from 38 dB up to 45 dB
100mm from 43 dB up to 48 dB
200mm up to 54 dB.

Glazed Partitions

80mm from 38 dB up to 39 dB
100mm from 38 dB up to 48 dB.



Structural

Solid Partitions

80mm - Medium Duty

Glazed Partitions

80mm - Medium Duty



Nursing Facility Healthcare







Research & Development Center







Convention Center





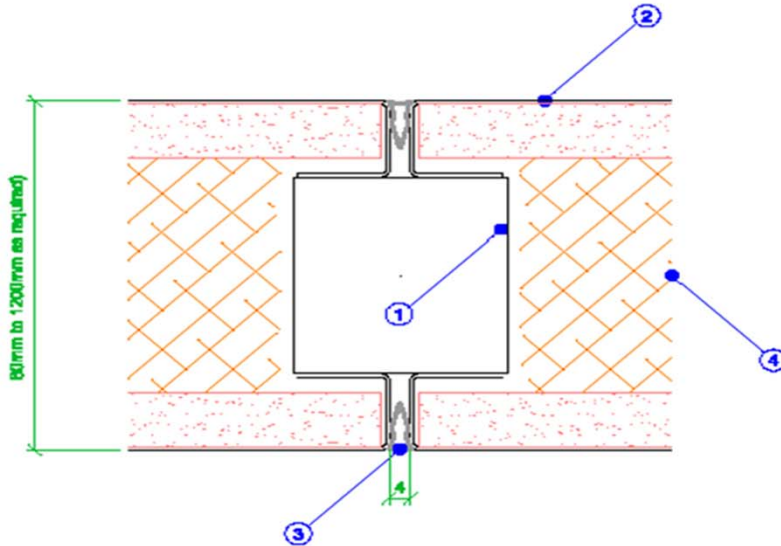


University Library



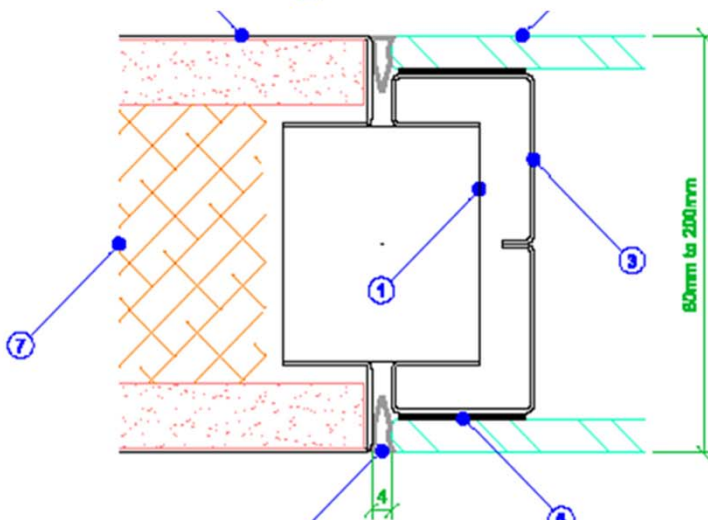


PARTITION DETAILS



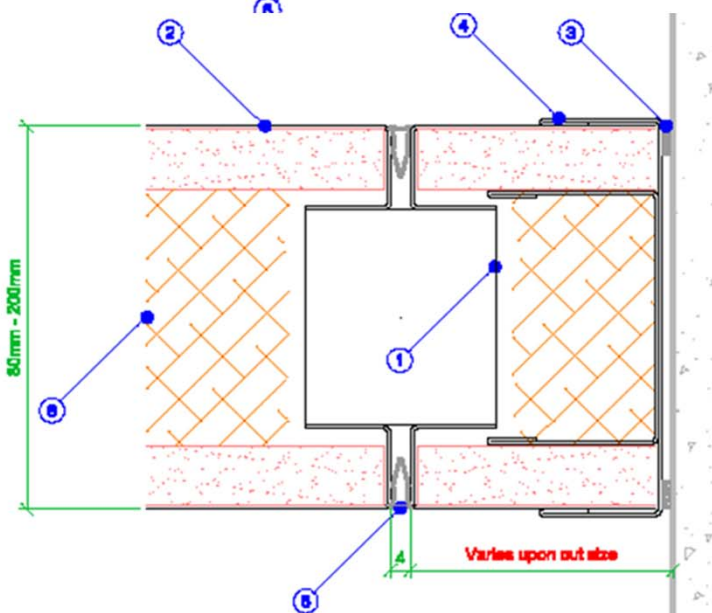
Solid-Solid Vertical Junction Detail

- ① Vertical stud assembly – E.Z Steel (can be adjusted in width as per requirement)
- ② Solid panel skin assembly – E.Z. Vinyl coated steel (plasterboard reinforced)
OR Stainless steel panel skin
- ③ Dry joint seal
- ④ Insulation (optional)



Solid-Glazed Vertical Junction Detail

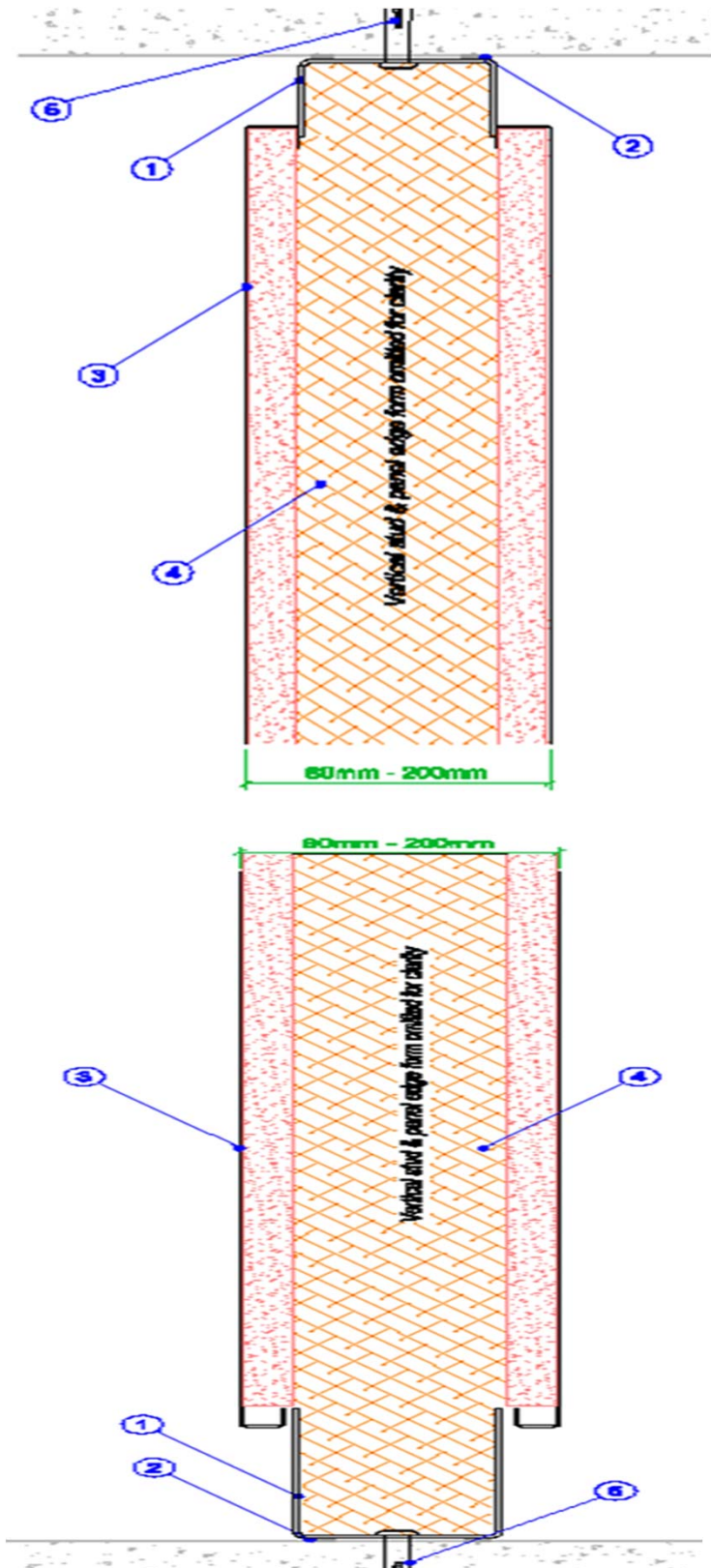
- ① Vertical stud assembly – mild steel
- ② Solid panel skin assembly – mild steel (plasterboard reinforced)
- ③ Glazing frame assembly – mild steel
- ④ 6.4mm Laminated / 6mm CFT Glass with polished edges
- ⑤ Opaque gloss – black VHB glazing tape
- ⑥ Dry joint seal
- ⑦ Insulation (optional)



Cut Panel Vertical Junction Detail

- ① Vertical stud assembly – mild steel
- ② Solid Panel Skin assembly – mild steel (plasterboard reinforced)
- ③ Acoustic Seal
- ④ Wall Channel mild steel
- ⑤ Dry-Joint seal
- ⑥ Insulation (optional)

PARTITION DETAILS



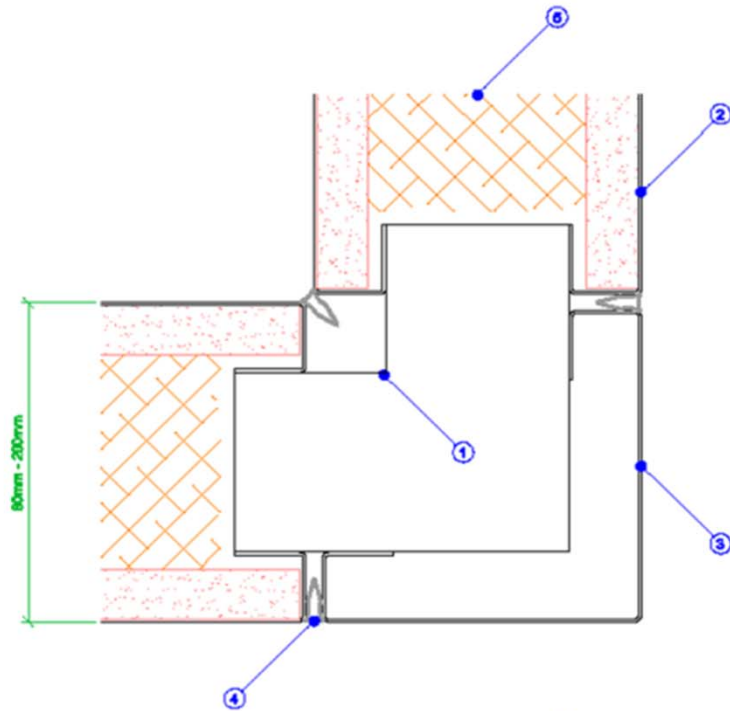
Solid Recessed Head Vertical Section Detail

- 1 Head - track - mild steel
- 2 Acoustic seal
- 3 Solid Panel Skin assembly – mild steel (plaster board reinforced)
- 4 Insulation (optional)
- 5 6x40 Hammer fixing for slab fixing OR 32mm SDST fixing screw if ceiling fixed

Solid Standard Base Vertical Section Detail

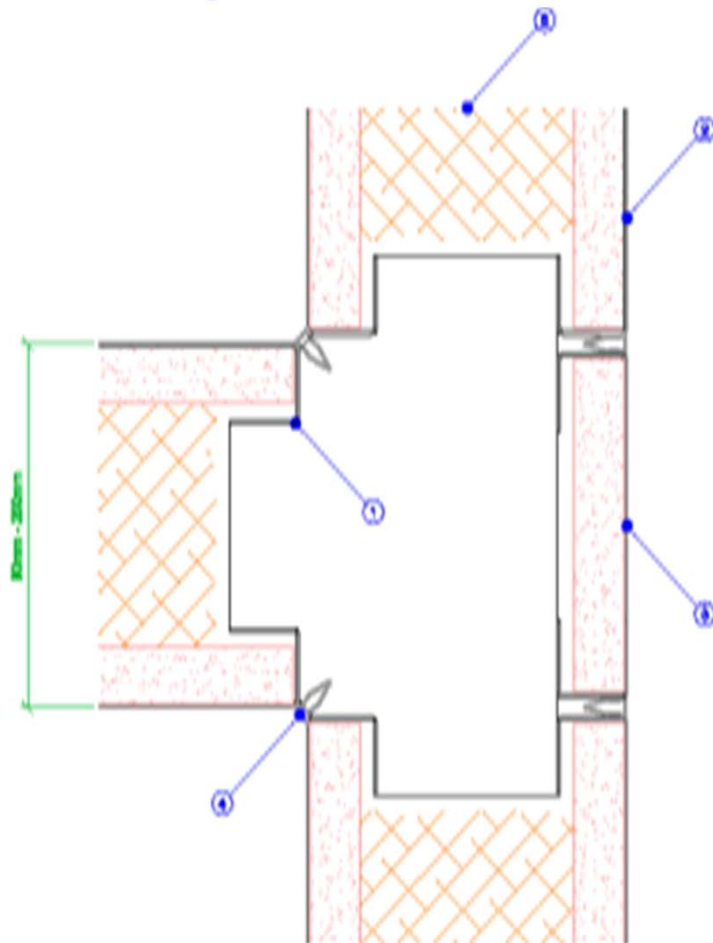
- 1 Floor Track outer - mild steel
- 2 Acoustic Seal
- 3 Solid Panel Skin Assembly – mild steel (plaster board reinforced)
- 4 Insulation (optional)
- 5 6x40 Hammer fixing at 300 ctrs.

PARTITION DETAILS



Solid 90° Corner Vertical Junction Detail

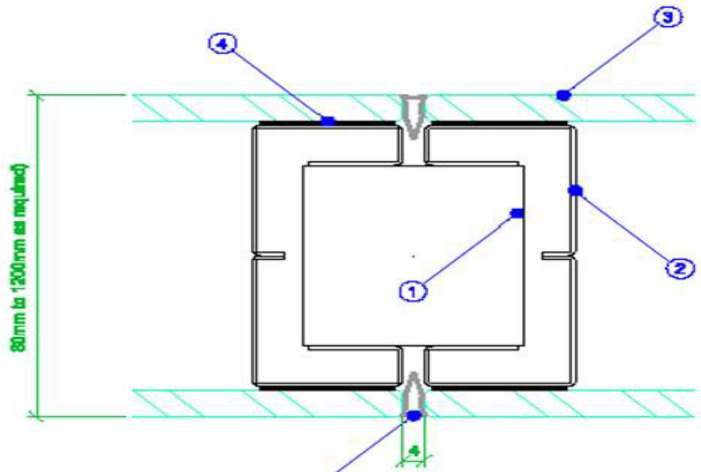
- 1 Vertical 90° corner stud assembly - mild steel
- 2 Solid Panel skin assembly mild steel (plaster board reinforced)
- 3 90° corner panel skin- mild steel
- 4 Dry - joint seal
- 5 Insulation (optional)



Solid 3 Way Vertical Junction Detail

- 1 Vertical 3 way stud assembly – mild Steel
- 2 Solid Panel skin assembly mild steel (plaster board reinforced)
- 3 3 way panel skin mild steel (plaster board reinforced)
- 4 Dry joint seal
- 5 Insulation (optional)

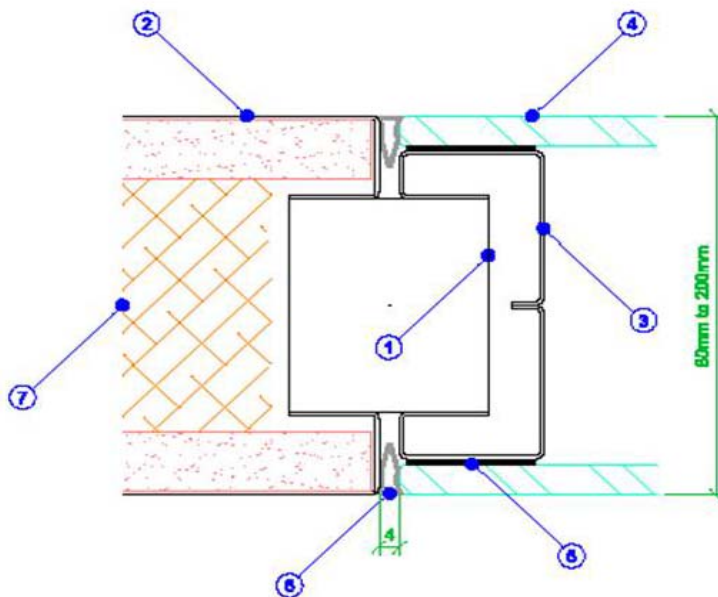
PARTITION DETAILS



Glazed-Glazed Vertical Junction Detail

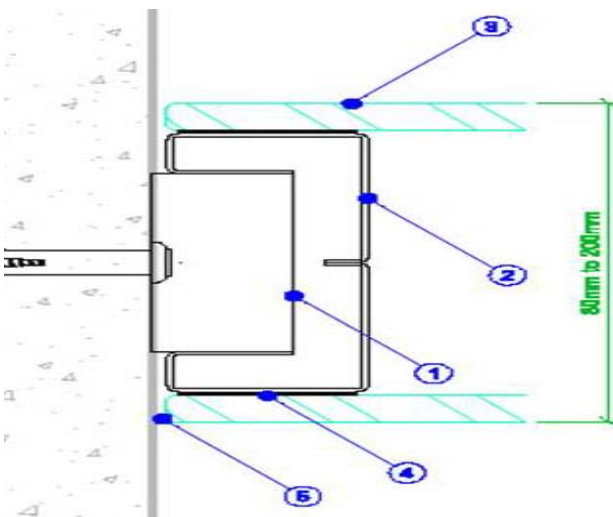
- 1 Vertical stud assembly – E.Z Steel
- 2 Glazing frame assembly – E.Z. Vinyl coated steel (Plaster board reinforced)
- 3 6.4mm Laminated / 6mm CFT Glass with polished edges
- 4 VHB glazing tape
- 5 Dry joint seal

Solid-Glazed Vertical Junction Detail



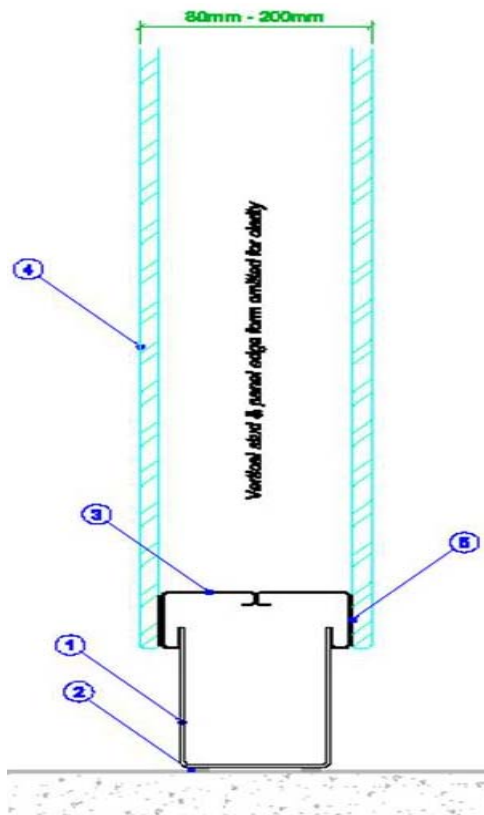
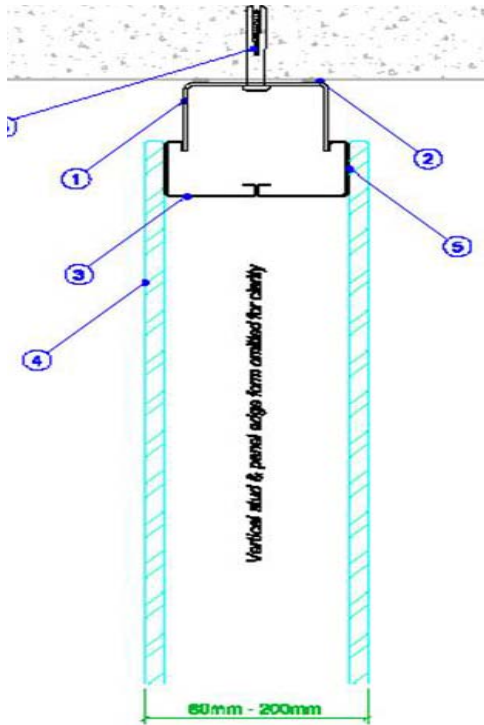
- 1 Vertical stud assembly – mild steel
- 2 Solid skin panel assembly – mild steel (plasterboard reinforced)
- 3 Glazing frame assembly – mild steel
- 4 6.4mm Laminated / 6mm CFT Glass with polished edges
- 5 Opaque glass – black VHB glazing tape
- 6 Dry joint seal
- 7 Insulation (optional)

Glass to Wall Vertical Junction Detail



- 1 Vertical stud assembly – mild steel
- 2 Glazing frame assembly – mild steel
- 3 6.4mm Laminated / 6mm CFT Glass with polished edges
- 4 Opaque glass – black VHB glazing tape
- 5 Silicone (If required)

PARTITION DETAILS



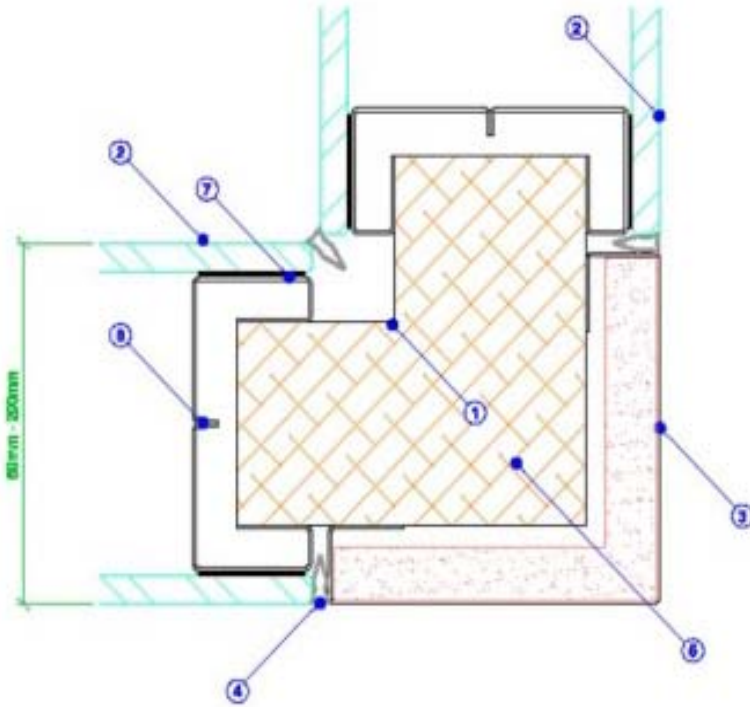
Glazed-Recessed Vertical Junction Detail

- 1 Recessed head - track - mild steel
- 2 Acoustic seal
- 3 Glazing frame assembly – mild steel
- 4 6.4mm Laminated / 6mm CFT Glass with polished edges
- 5 Opaque gloss – black VHB glazing tape
- 6 6x40 Hammer fixing for slab fixing OR 32mm SDST fixing screw if ceiling fixed

Glazed Standard Base Vertical Section Detail

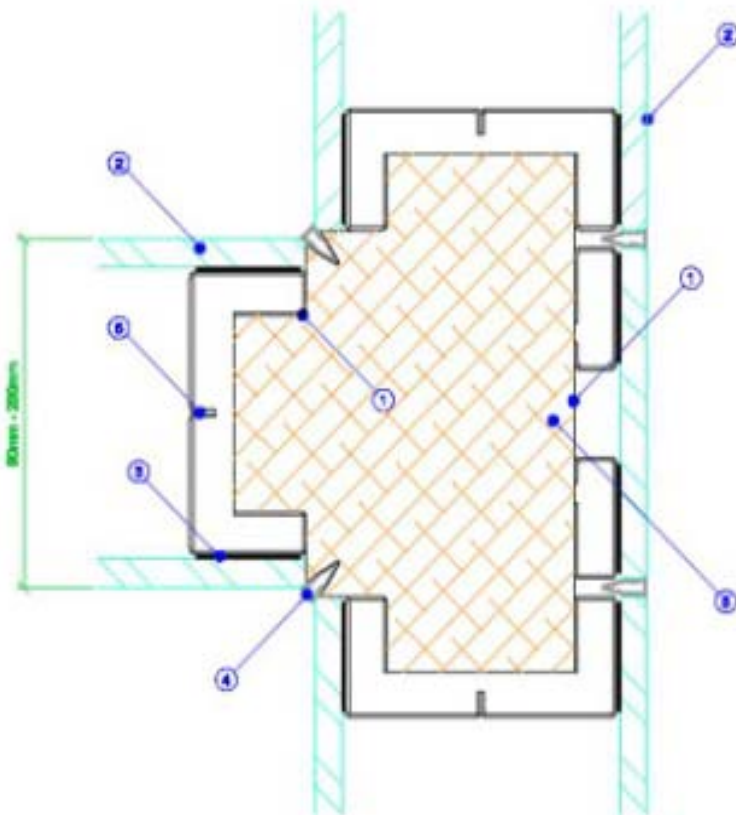
- 1 Floor Track outer - mild steel
- 2 Acoustic Seal
- 3 Glazed Frame Assembly – mild steel
- 4 6.4mm Laminated / 6mm CFT Glass with polished edges
- 5 Opaque gloss – black VHB glazing tape

PARTITION DETAILS



Glazed 90° Corner Vertical Junction Detail

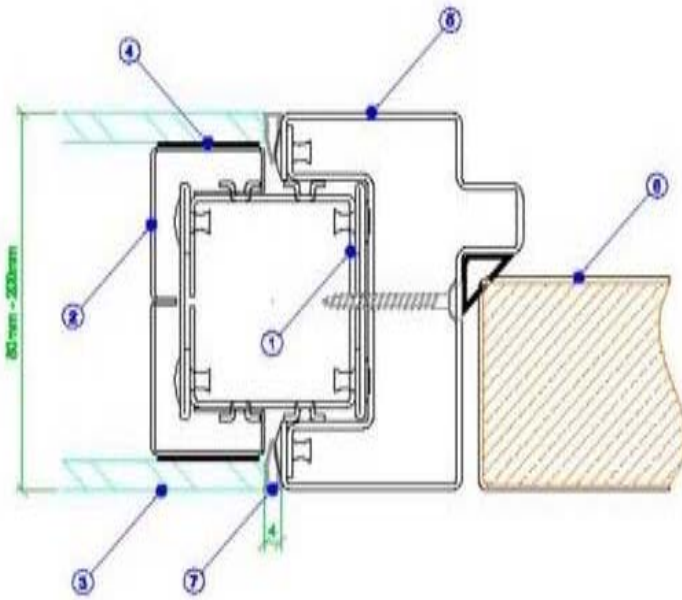
- 1 Vertical 90° corner stud assembly - mild steel
- 2 6.4mm Laminated / 6mm CFT Glass with polished edges
- 3 90° corner panel skin- mild steel
- 4 Dry - joint seal
- 5 Insulation (optional)
- 6 Glazing Frame assembly – mild steel
- 7 Opaque gloss – black VHB glazing tape



Glazed 3 Way Vertical Junction Detail

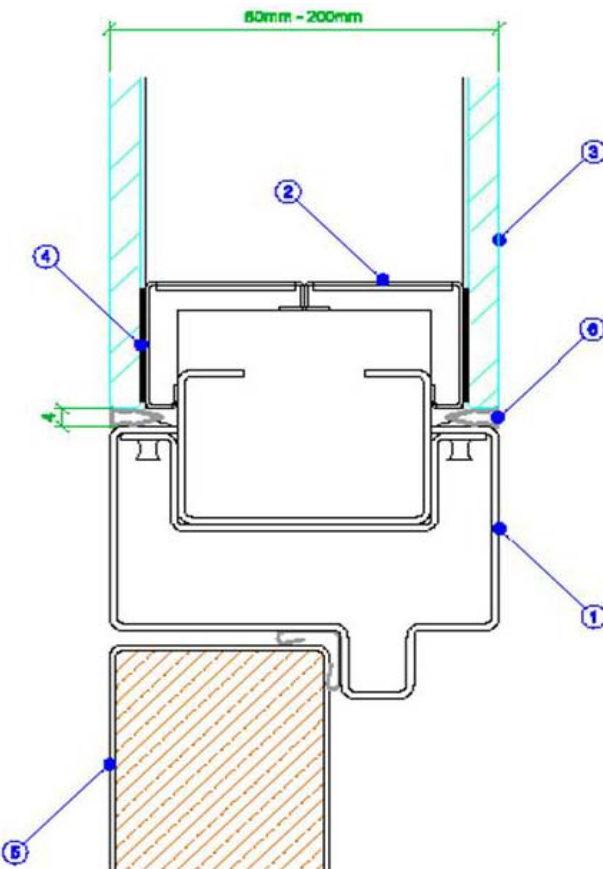
- 1 Vertical 3 way stud assembly – mild Steel
- 2 6.4mm Laminated / 6mm CFT Glass with polished edges
- 3 Opaque gloss – black VHB glazing tape
- 4 Dry joint seal
- 5 Insulation (optional)

PARTITION DETAILS



Glazed-Door Set Timber Vertical Junction Detail

- 1 Vertical stud assembly - mild steel
- 2 Glazing Frame Assembly – mild steel
- 3 6.4mm Laminated / 6mm CFT Glass with polished edges
- 4 Opaque gloss – black VHB glazing tape
- 5 Door Frame assembly – Timber
- 6 Door leaf assembly – Timber
- 7 Dry - Joint Seal



Glazed-Door Set Horizontal Junction Detail

- 1 Door Frame Assembly - mild steel
- 2 Glazed Frame Assembly – mild steel
- 3 6.4mm Laminated / 6mm CFT Glass with polished edges
- 4 Opaque gloss – black VHB glazing tape
- 5 Door leaf assembly – Timber
- 6 Dry - Joint Seal

Pink Zone, Plot # 9094, PIN # 81050411, New Industrial Area, Doha, Qatar.

N E D

Mediline Partition System

Workspace redefined



NORWOOD QATAR LLC
Steel Solution