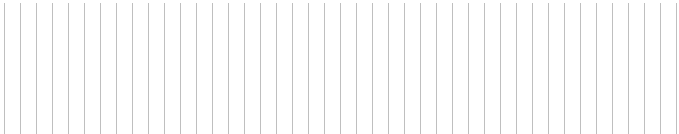
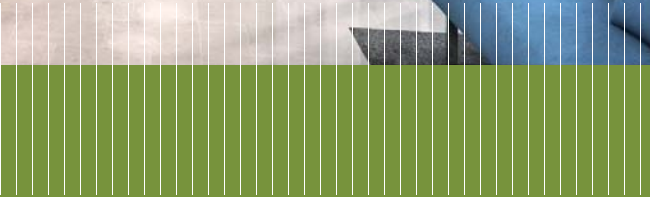


Wall Lining System

Workspace redefined





Wall Lining System

Produces fully relocatable wall lining systems

Create your own environment with our range of aesthetically pleasing wall lining and cladding systems, Norwood's decorative wall cladding system is designed as a fully integrated and versatile interior finishing system that incorporates high quality wall linings, lift lobby linings as well as reveals, soffits, bulkheads and skirting. Our Wall Lining systems can become the main aesthetic for a building, or alternatively used to enhance the acoustic, fire and thermal performance of an existing masonry wall. Decorate paneling can be used to help conceal any building irregularities when required within renovation projects.

Norwood wall cladding systems accommodate fire performance, resistance to moisture, detailing around fenestration, openings, acoustics, environmental concerns and a host of other technical properties. A highly versatile and adaptable solution for services, bulkheads, stylish lift reveals and or decorative skirting's, all available in brushed & PPC aluminium as well as stainless steel. Wall lining / cladding systems offer limitless design choice, especially considering cost.



We turn shell constructions into key-ready buildings (Photo left: Nursing Facility, Qatar; middle & right: Tadmur Head Quarters, Qatar)

Construction

WALL LINING ELEMENTS

Formed Panel skin of 0.75mm pre coated steel on a galvanized substrate & complete with a 12.5mm sheet of plaster board bonded to the reverse of each panel skin.

Norwood wall lining system: designed & manufactured for High specification offices, Educational institution, Data centers, Controlled environments & Medical areas

Thickness:

50mm as standard can be expanded or reduced to accommodate ducts & services

Strength:

Medium Duty

Steel frame:

Galvanized steel studs and cross profiles.

Panels Finish:

Vinyl coated Steel 0.75mm with range of plain colors, steel finishes, timber finishes, fabric finishes & stone finishes

Floor channels:

Recessed / flush steel profiles

Ceiling channels:

Recessed / flush steel profiles

Skirting:

Recessed steel floor tracks

Design Panels:

Range of Design Panels can be integrated with in the system incorporating back light effects

MODULE JUNCTION

Factory premade corner & three way junctions

Geometrical features

DIMENSIONS

Module Height:

Up to 3000mm single lift & above 3000mm to 11000mm multiple lifts

Standard Module Size:

1000mm x 3000mm

Panel width:

300mm to 1000mm in 100mm increments

Installation features

TOLERANCES

floor: ± 15 mm

ceiling: ± 15 mm

CONNECTION OF PANEL TYPES

Panel Skins are friction locked on to the vertical stud giving a minimal gap 0.5mm between panel skins

INTEGRATION OF ELECTRICAL AND DATA SERVICES

Range of services can be concealed and housed with in a clear space

Service panel with removable skins allows the installation and integration of electric switches and power sockets.

Services:

can be installed either horizontally or vertically and easily accessed for maintenance or future alteration.

Finish

Skins: Vinyl coated Steel 0.75mm

Colour

Range of plain colors, steel finishes, timber finishes, fabric finishes & stone finishes

Working wall features

WORKING WALL

Solid panel vertical junctions can accommodate a concealed racking upright that facilitates the support of furniture items such as shelving, storage units and desking. The upright can be retrofitted and relocated if required.

OPTION: INSERT PANELS

The insert panel design option allows various finishes to be installed into the wall face. The panel finish can be of steel painted/perforated, timber, fabric or leather.

Use

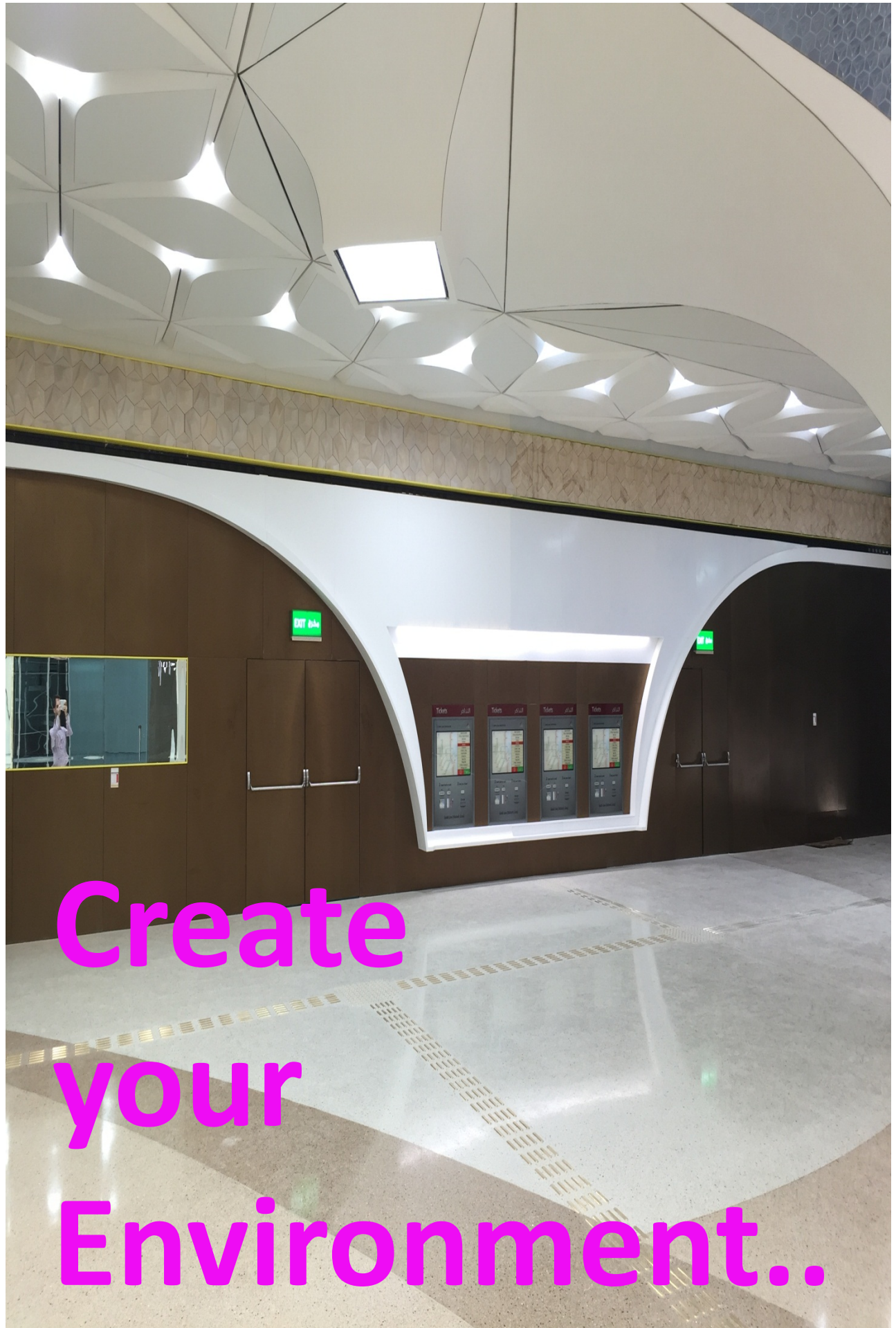
Whiteboards, drawings, pinboards, presentation material etc. magnetically fixed to the partitions.

The vinyl coated finish of the partitions means they can be cleaned easily by using a rubber squeegee and a mild detergent.

Fire

SURFACE SPREAD OF FLAME: BS 476-7 to class 0

In accordance with BS Test standards.



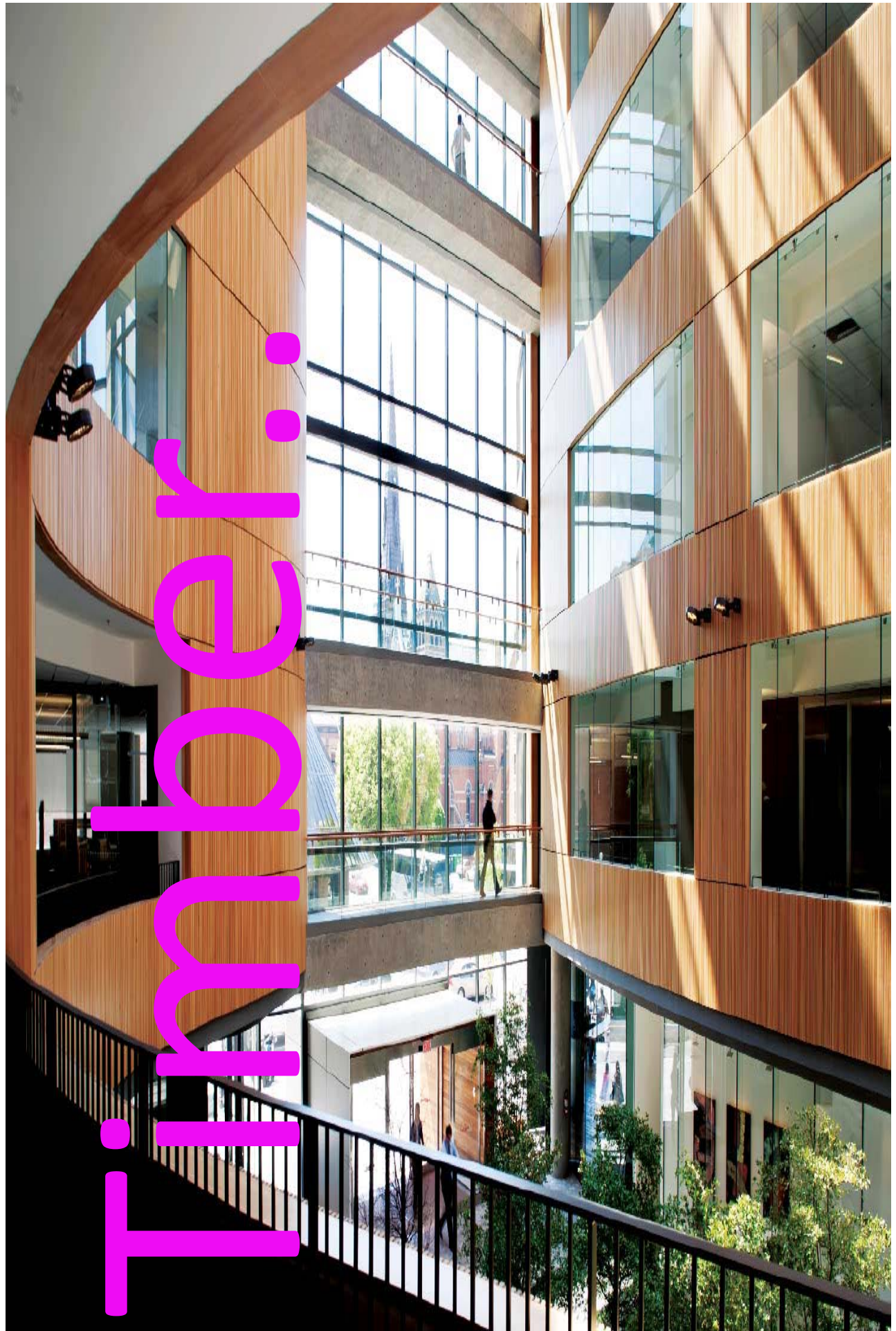
**Create
your
Environment..**





Design Panel
Workspace redefined

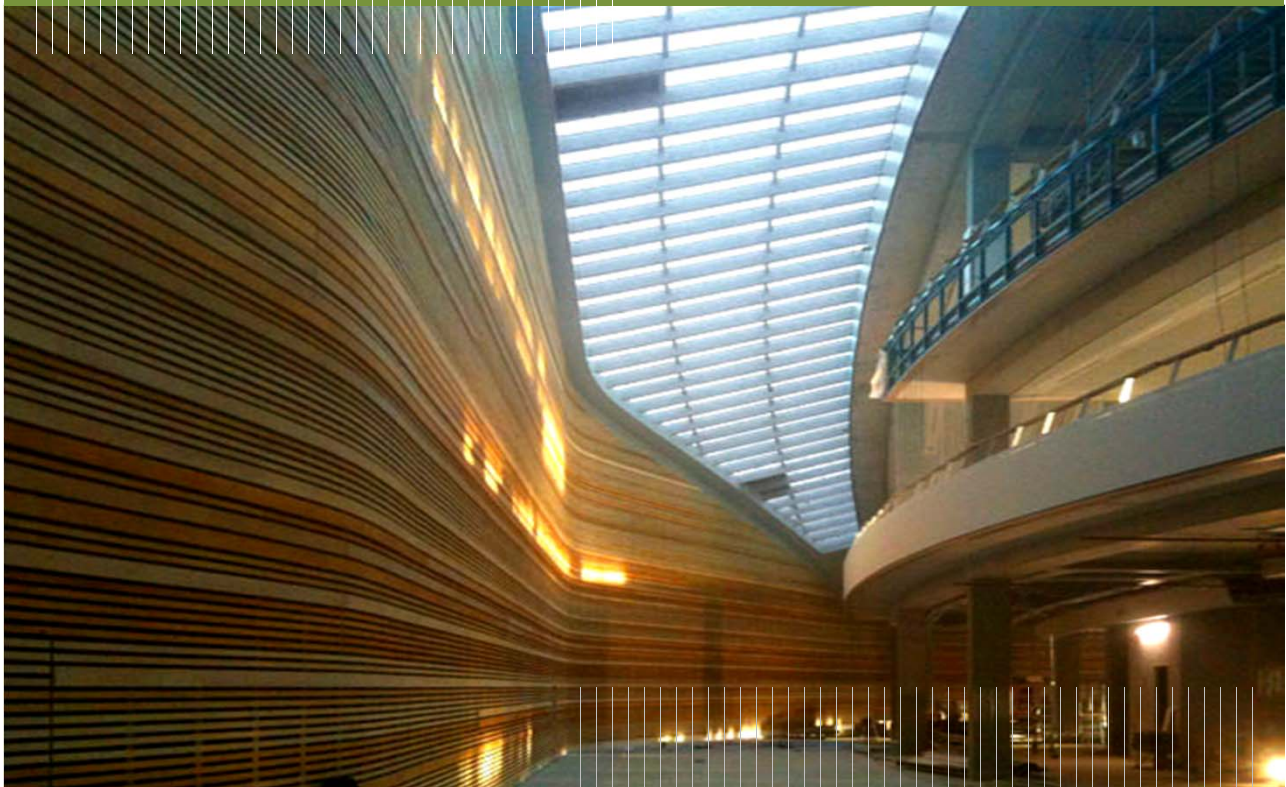




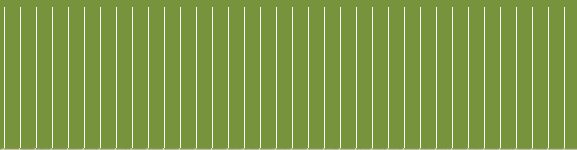


Wall Lining - Timber

Workspace redefined

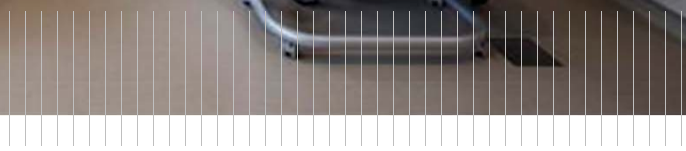
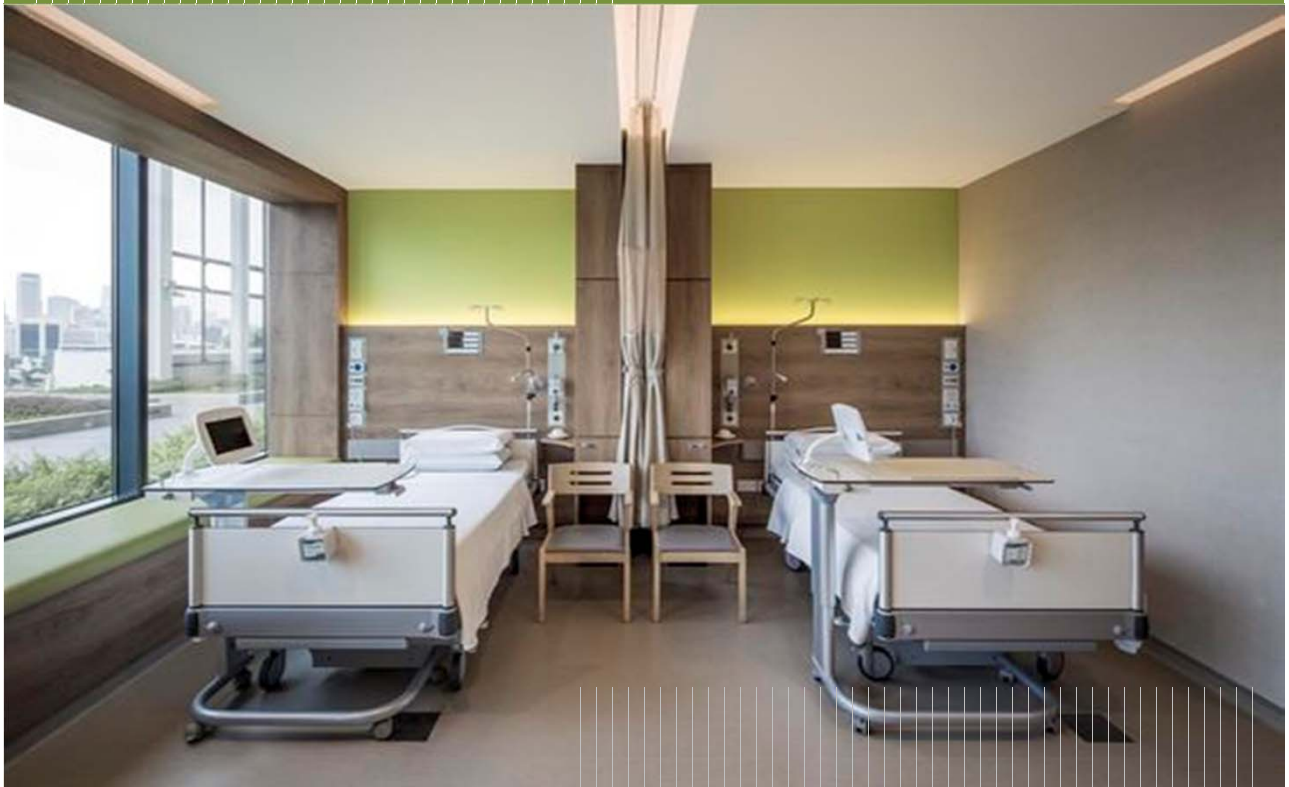






Wall Lining - HPL

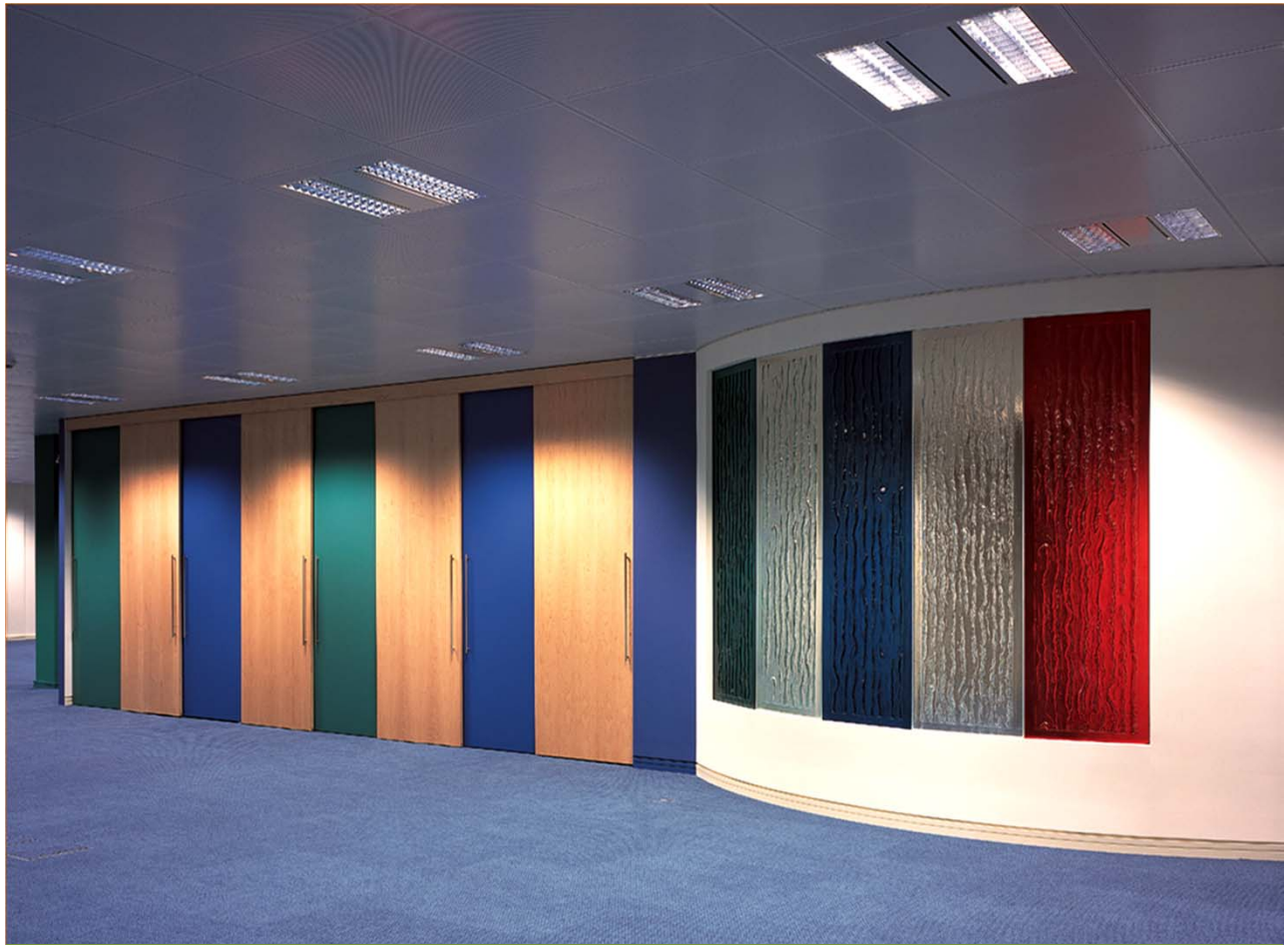
Workspace redefined





Glas



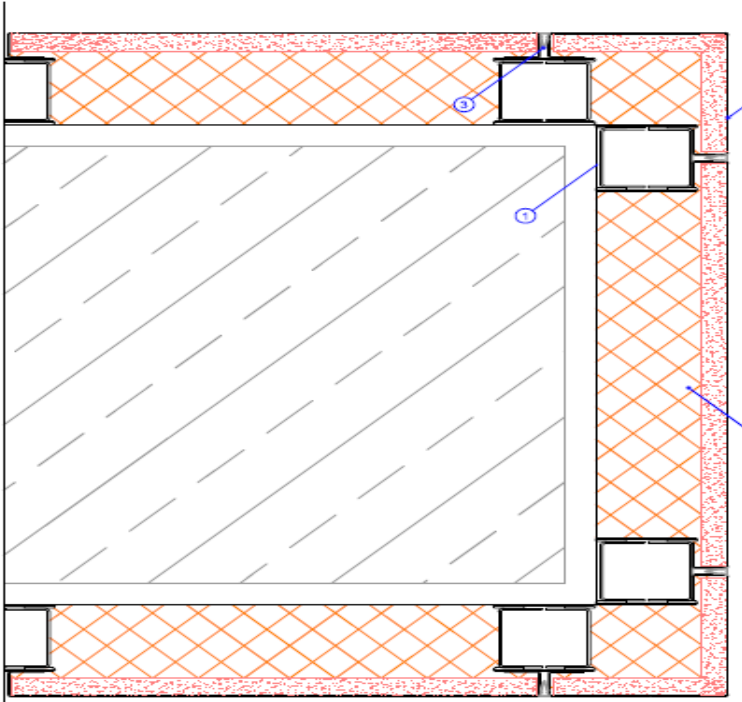


Wall Lining - Glass

Workspace redefined

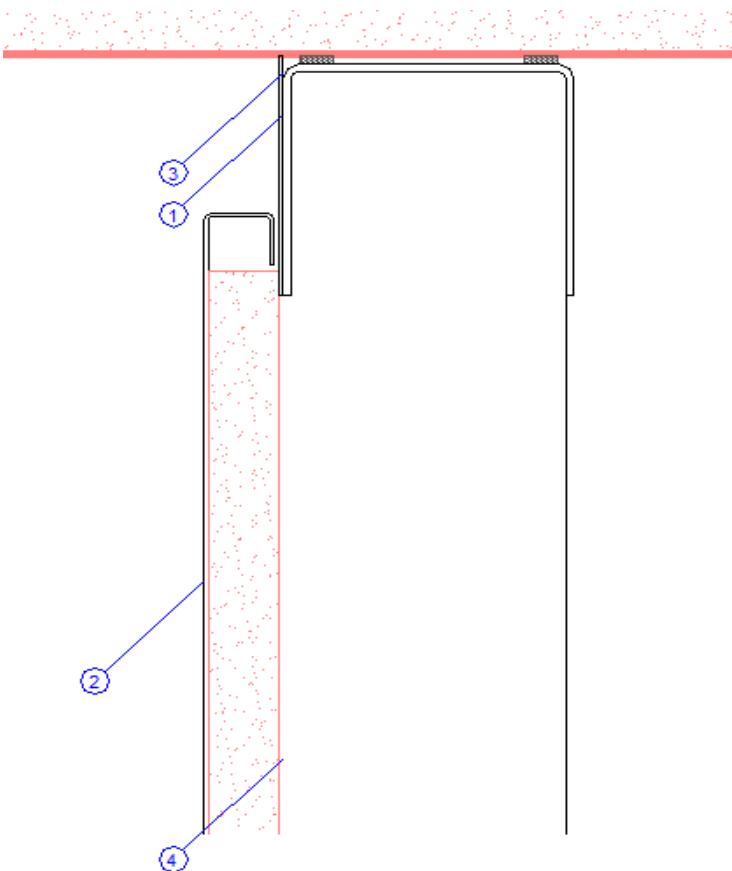


WALL LINING DETAILS



Wall Lining Details

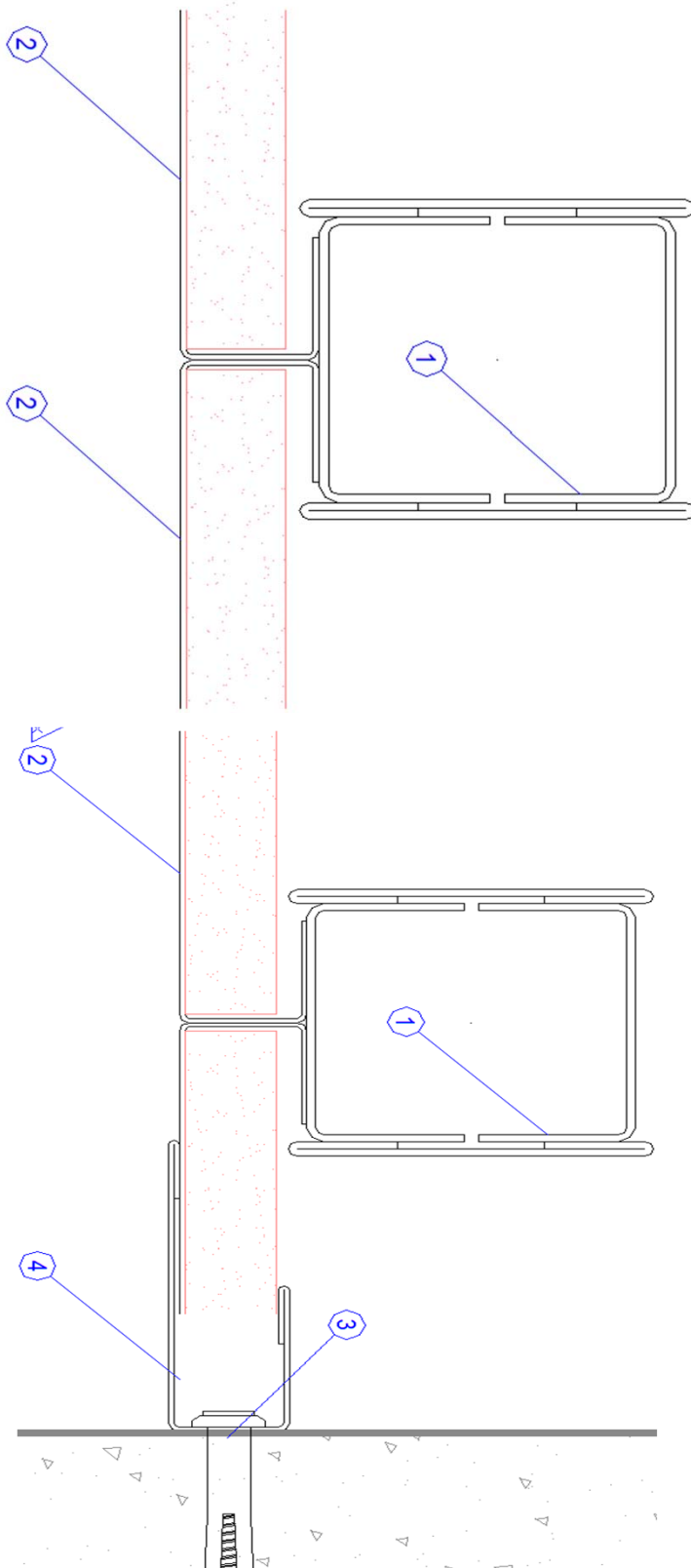
- 1 Vertical stud assembly - mild steel
- 2 Solid Panel skin assembly – vinyl coated steel (plaster board reinforced)
- 3 Dry - Joint seal
- 4 Insulation



Solid to Head Details

- 1 Recessed Head-track – mild steel
- 2 Solid Panel Skin assembly – mild steel (plaster board reinforced) with design panel element
- 3 Head track cover – 0.75mm pre coat vinyl steel
- 4 1.2mm Studwork

WALL LINING DETAILS

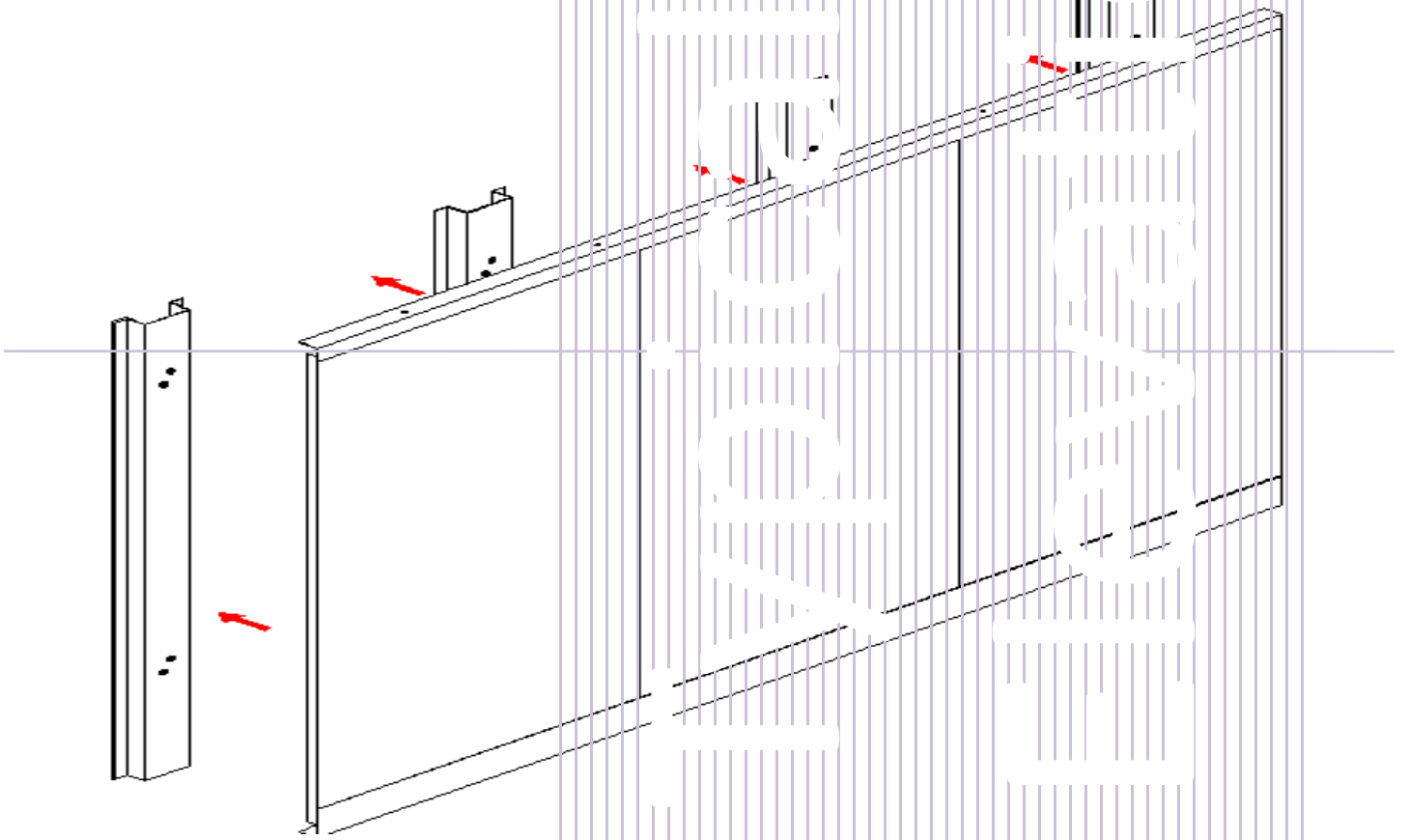
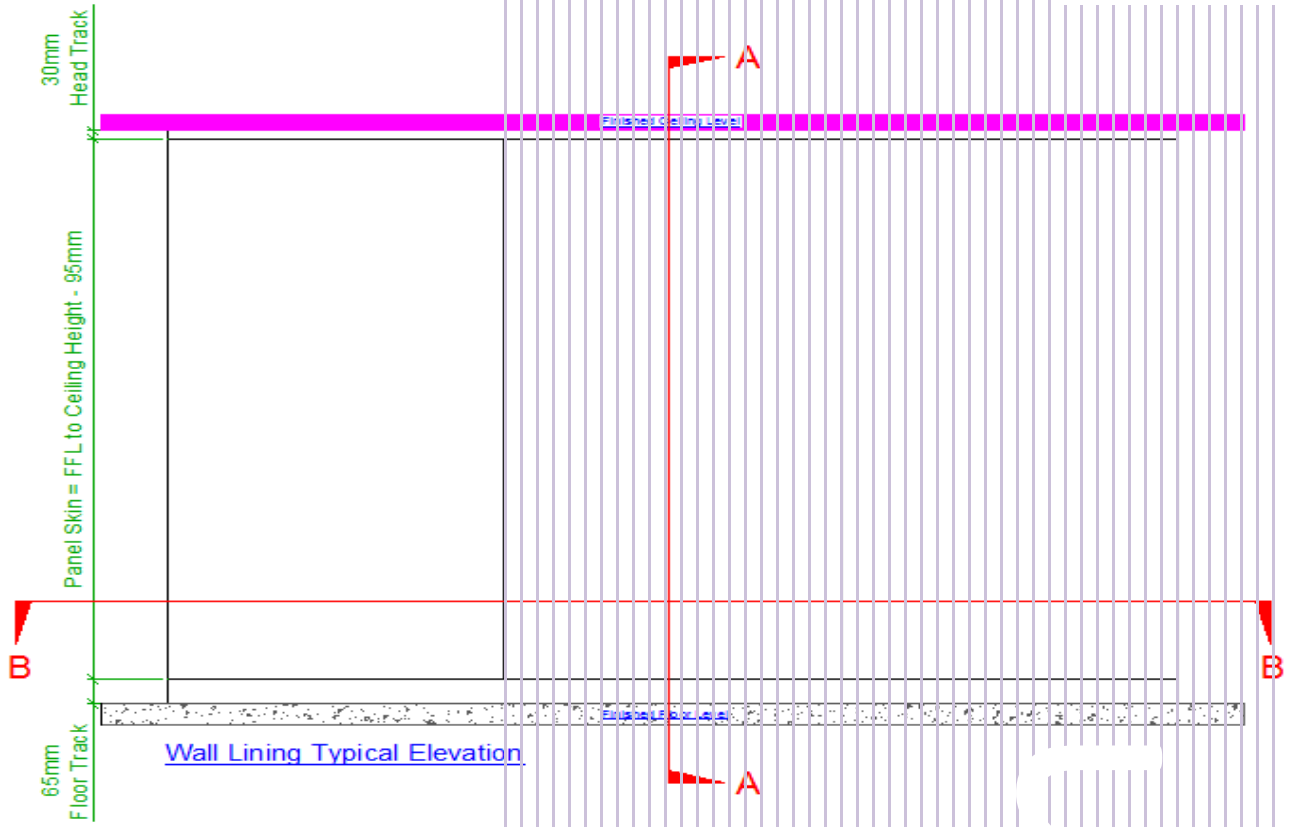


Solid to Solid Details

- 1 Vertical Stud assembly – mild steel
- 2 Solid Panel Skin assembly – mild steel (plaster board reinforced) with design panel element

Solid to Wall Details

- 1 Vertical Stud assembly – mild steel
- 2 Solid Panel Skin assembly – mild steel (plaster board reinforced) with design panel element
- 3 6 X 40 Hammer fixing
- 4 Wall Channel



Pink Zone, Plot # 9094, PIN # 81050411, New Industrial Area, Doha, Qatar.

Lining

Wall Lining System

Workspace redefined



NORWOOD QATAR LLC
Steel Solution