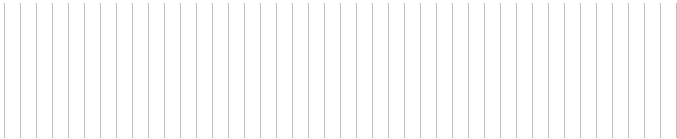
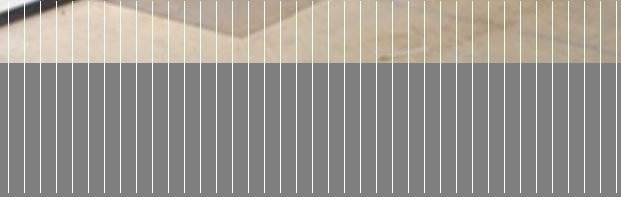


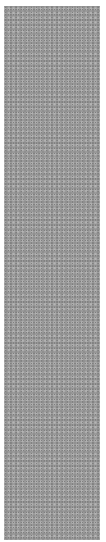


Pod Solve Solution

Workspace redefined



NORWOOD QATAR LLC
Steel Solution



POD Solve Solution

Demountable & relocatable pods to create a truly flexible teaching environment

PodSolve is a simple concept. Instead of schools being constructed from the conventional fixed structural frame, PodSolve comprises a series of individual steel-framed rooms or classrooms that can be easily relocated, assembled or dismantled to create a truly flexible teaching environment.

Crucially, the pods are free-standing and are entirely structurally independent from the building envelope in which they are placed.

The PodSolve system can be tailored to suit any individual requirements with panel widths of 300mm, 500mm and 1000mm, these can be solid or glazed. Norwood can produce various door styles in an extensive range of colours and materials to accompany any tailor made pod. Flush fit walk on laminated sky lights allow natural daylight to permeate the pods. Pods also include sound absorbing panels built in to the ceilings and walls to ensure great acoustic ratings.



Construction

POD ELEMENTS

The Podsolve solution utilizes a highbred of Norwood's existing systems cleanseal & mediline, The Pod solve system can be tailored to suit individual requirements with panel widths of 300 mm, 500 mm and 1000 mm modular size panels, glazed panels and door styles.

Strength:
Heavy Duty

Norwood pod system:
designed & manufactured for High Educational institution, Controlled environments, Medical areas, Data centers & high specification office

Thickness:
50mm as standard can be expanded or reduced to accommodate ducts & services

Panel Assembly:
Panel skins are friction locked either side on to studs, allowing each skin, from either side to be demountable, giving access to the partition void

Strength:
Medium Duty

Steel frame:
Galvanized steel studs and cross profiles.

Floor channels:
Recessed / flush steel profiles

Ceiling channels:
Recessed / flush steel profiles

Skirting:
Recessed steel floor tracks

Wall / Vertical Structure:
Adjustable steel profile

Finish

Skins: Vinyl coated Steel 0.75mm

Colour

Range of plain colors, steel finishes, timber finishes, fabric finishes & stone finishes

Geometrical features

DIMENSIONS

Module Height:
Up to 3000mm single lift & above 3000mm to **11000mm** multiple lifts

Standard Module Size:
1000mm x 3000mm

Panel width:
300mm to 1000mm in 100mm increments

Installation features

TOLERANCES

floor: ± 15 mm
ceiling: ± 15 mm

CONNECTION OF PANEL TYPES

Panel Skins are friction locked on to the vertical stud giving a minimal gap 0.5mm between panel skins

INTEGRATION OF ELECTRICAL AND DATA SERVICES

Range of services can be concealed and housed with in a clear space

Service panel with removable skins allows the installation and integration of electric switches and power sockets.

Services:
can be installed either horizontally or vertically and easily accessed for maintenance or future alteration.

Design Panels:
Range of Design Panels can be integrated with in the system incorporating back light effects

MODULE JUNCTION

Factory premade corner & three way junctions

Ceiling System:
A range of systems are available to suit projects applications; Plank, long span, walk on panels, steel pan tiles, plastic faced plasterboard tiles, fissured tiles

Working wall features

WORKING WALL

Solid panel vertical junctions can accommodate a concealed racking upright that facilitates the support of furniture items such as shelving, storage units and desking. The upright can be retrofitted and relocated if required.

OPTION: INSERT PANELS

The insert panel design option allows various finishes to be installed into the wall face. The panel finish can be of steel painted/perforated, timber, fabric or leather.

Use

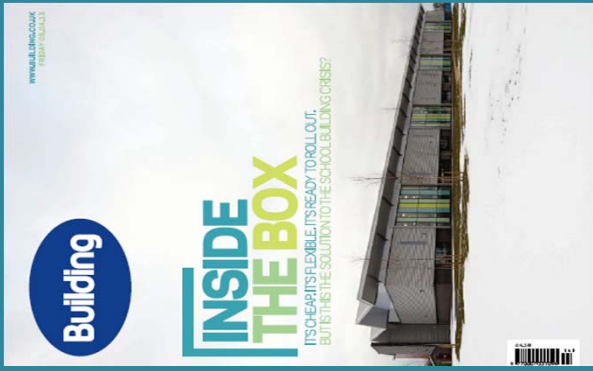
Whiteboards, drawings, pin boards, presentation material etc. magnetically fixed to the partitions.

The vinyl coated finish of the partitions means they can be cleaned easily by using a rubber squeegee and a mild detergent.

Fire

SURFACE SPREAD OF FLAME:
BS 476-7 to class 0

In accordance with BS Test standards.



PROJECTS **PodSolve**

It's not just a school building, it's a school. The PodSolve concept is a modular, steel-framed building system that can be easily relocated, assembled or dismantled to create truly flexible teaching environments. The concept was developed by InterServe, Maber Architects, Arup & specialist partition manufacturers Norwood.

PodSolve is a modular, steel-framed building system that can be easily relocated, assembled or dismantled to create truly flexible teaching environments. The concept was developed by InterServe, Maber Architects, Arup & specialist partition manufacturers Norwood.



PROJECTS **PodSolve**

PodSolve is a modular, steel-framed building system that can be easily relocated, assembled or dismantled to create truly flexible teaching environments. The concept was developed by InterServe, Maber Architects, Arup & specialist partition manufacturers Norwood.

PodSolve is a modular, steel-framed building system that can be easily relocated, assembled or dismantled to create truly flexible teaching environments. The concept was developed by InterServe, Maber Architects, Arup & specialist partition manufacturers Norwood.

PROJECTS **PodSolve**

PodSolve is a modular, steel-framed building system that can be easily relocated, assembled or dismantled to create truly flexible teaching environments. The concept was developed by InterServe, Maber Architects, Arup & specialist partition manufacturers Norwood.

PodSolve is a modular, steel-framed building system that can be easily relocated, assembled or dismantled to create truly flexible teaching environments. The concept was developed by InterServe, Maber Architects, Arup & specialist partition manufacturers Norwood.

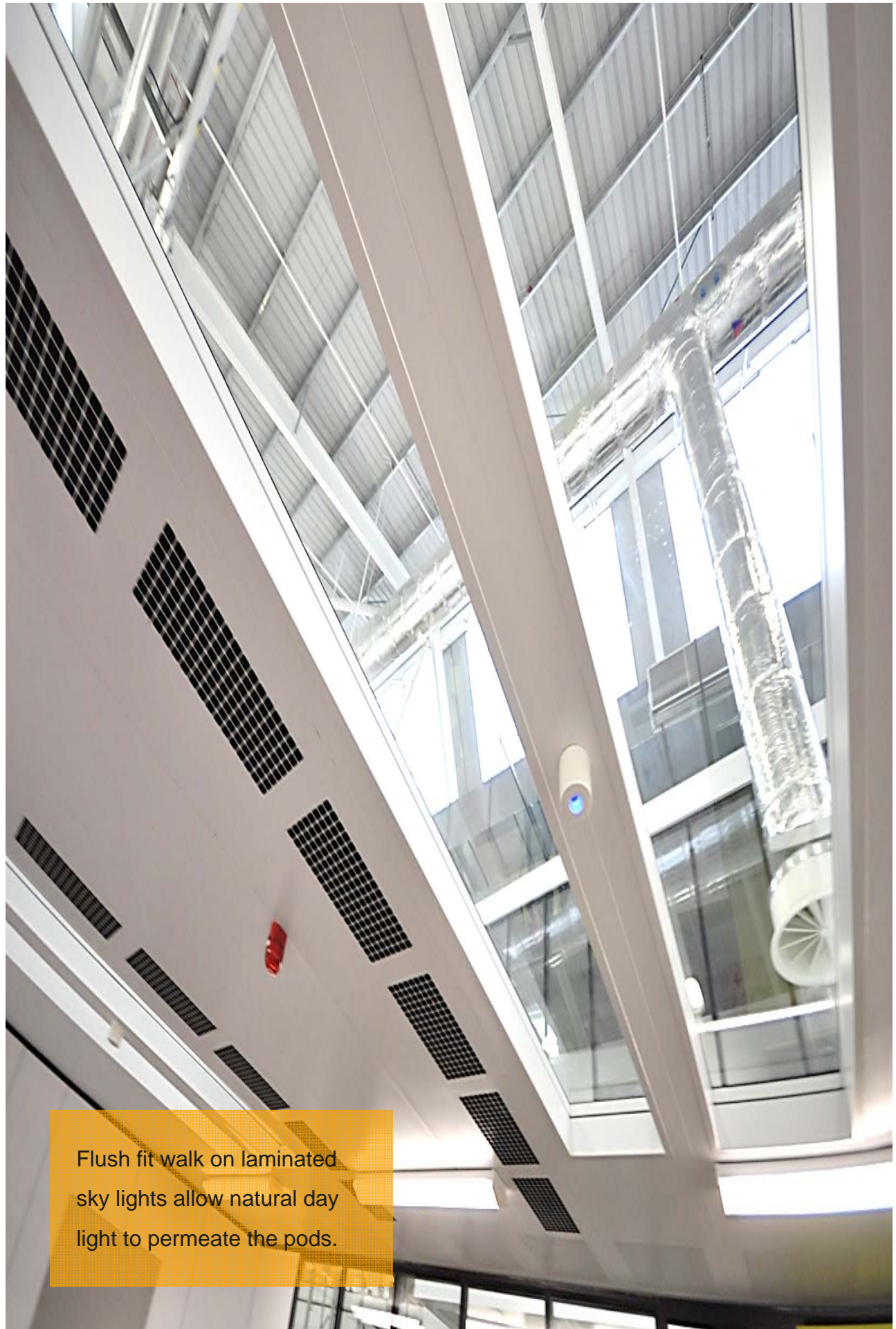


The Solution to the school building crisis...

The **Building Magazine** –UK. has given the full coverage to the revolutionary pod system developed by InterServe, Maber Architects, Arup & specialist partition manufacturers Norwood.

Their PodSolve concept is simple: instead of schools being constructed from the conventional fixed structural frame, PodSolve comprises a series of individual steel-framed rooms or classrooms that can be easily relocated, assembled or dismantled to create truly flexible teaching environment. Crucially, the pods are free-standing and are entirely structurally independent from the building envelope in which they are placed.

At Leeds East Academy, the results speak for themselves. The 1,100 pupil, six-form entry school took just 60 weeks to construct rather than the more usual 80 While Leeds East Academy is the country's only PodSolve school at present, InterServe believes that it will be the first of many. As the company's divisional director David Large points out: "The concept was developed from a general feeling of disappointment that the standardisation model didn't really offer anything different and was also driven by the desire to create something more than just square boxes off a corridor."



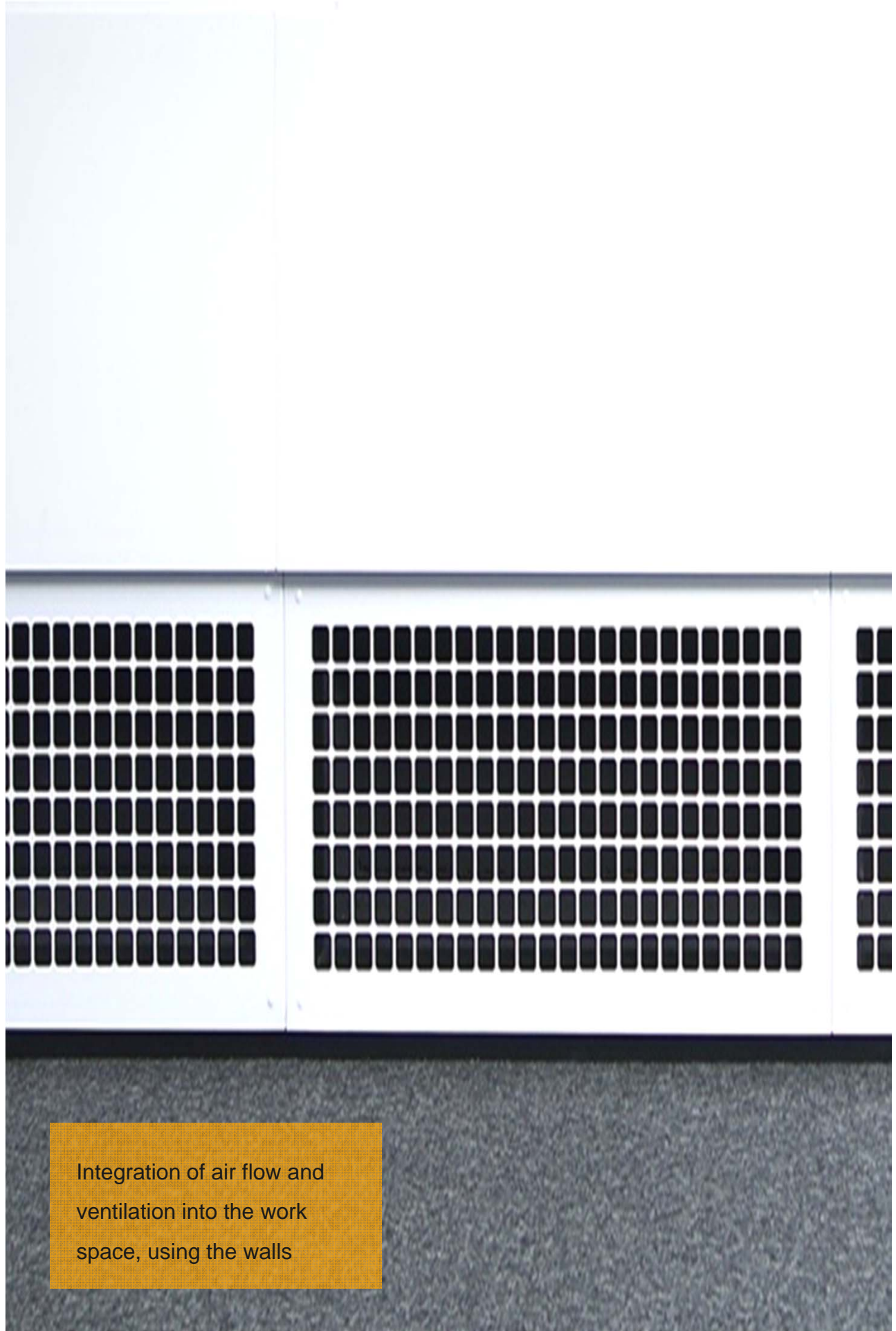
Flush fit walk on laminated sky lights allow natural day light to permeate the pods.



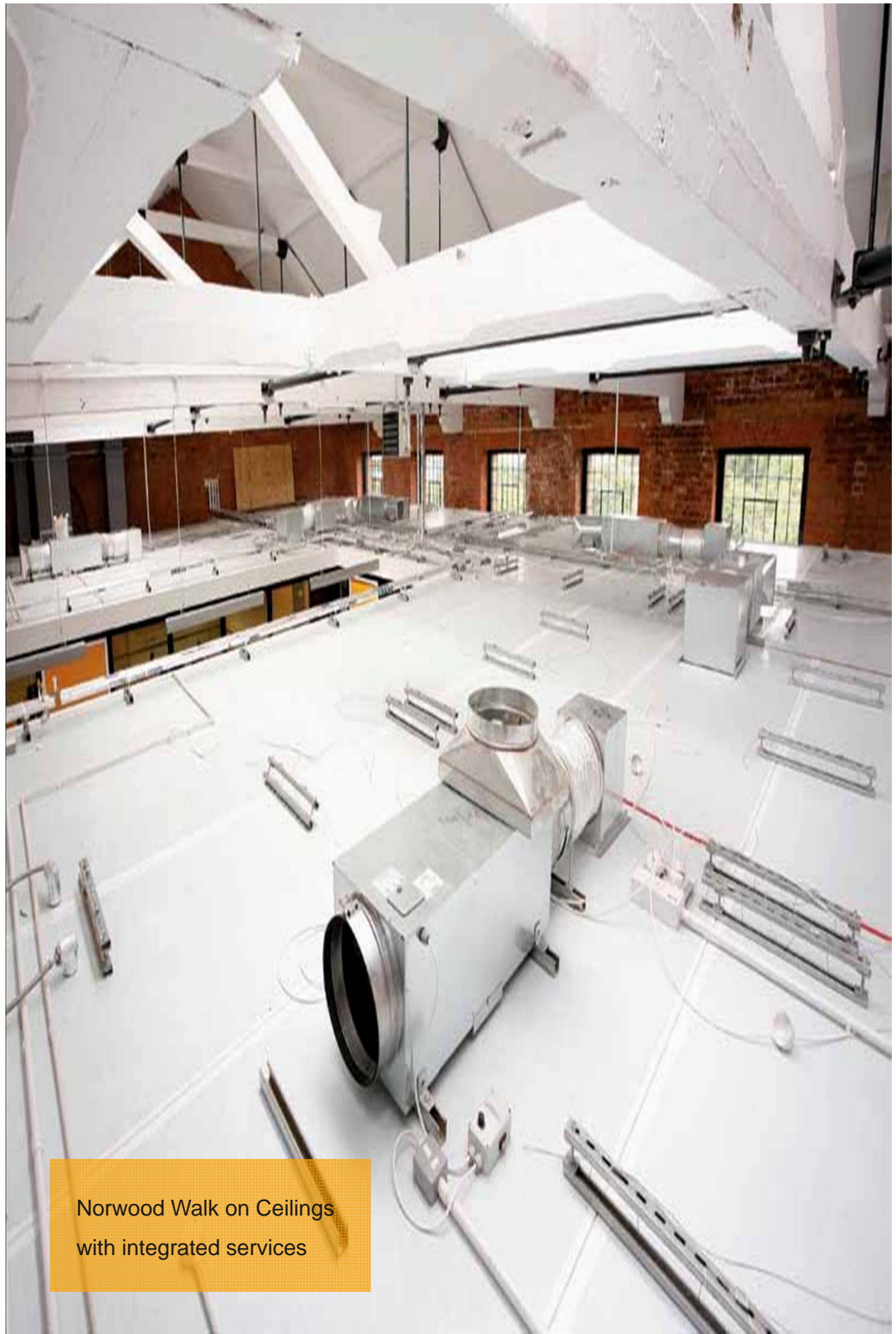
Sound absorbing panels built in
to the ceilings and walls



Pod full height glazed partition wall with glass frosting



Integration of air flow and ventilation into the work space, using the walls

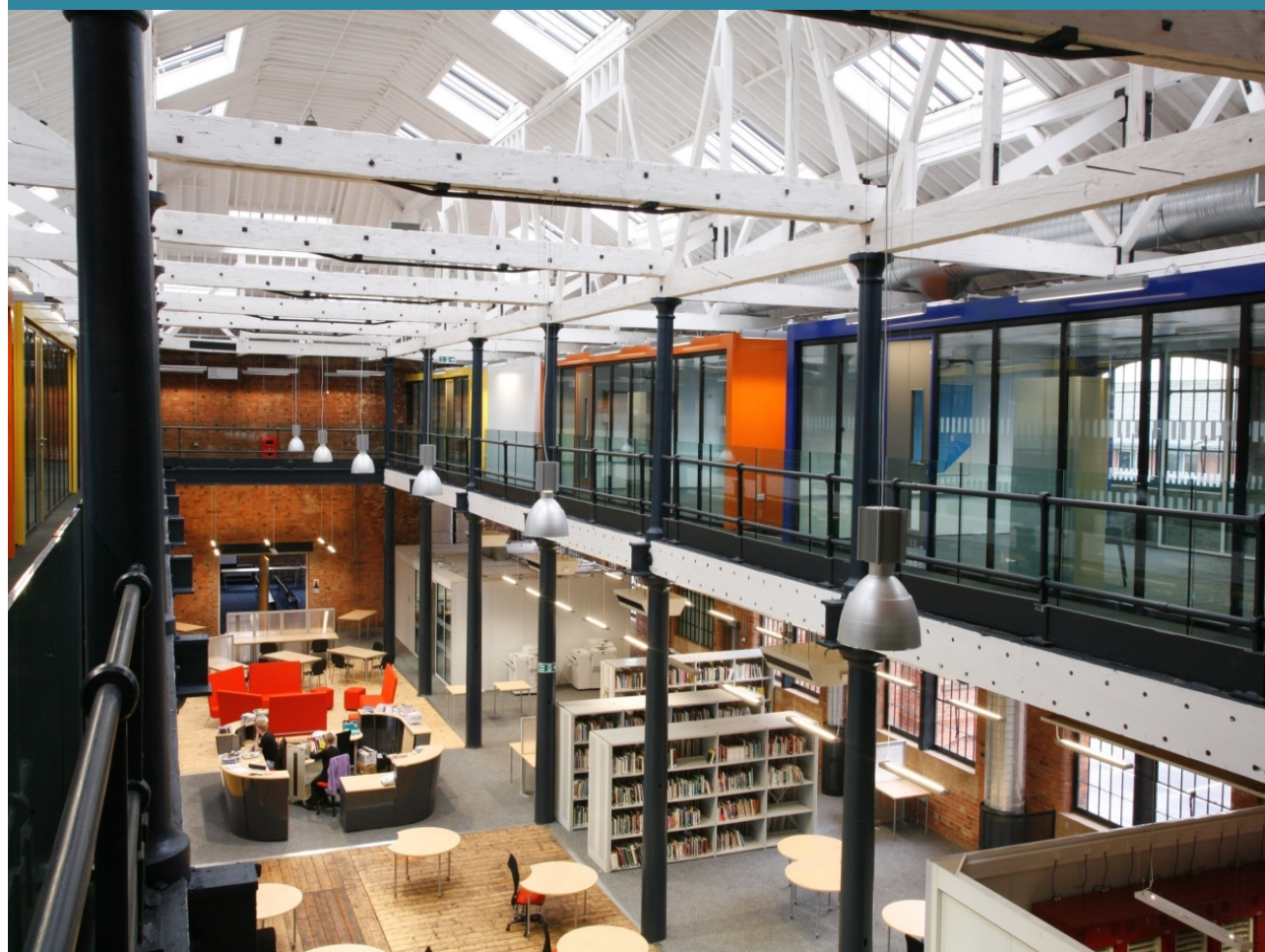


Norwood Walk on Ceilings
with integrated services



Norwood Walk on Ceilings
with integrated services

EDUCATION



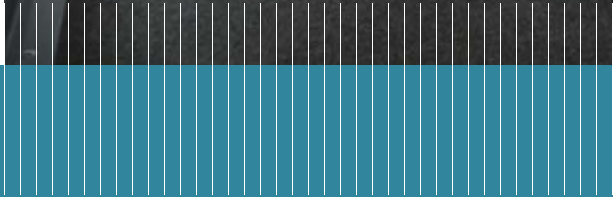




Pod Panel System

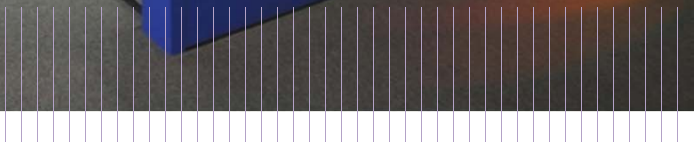
Workspace redefined





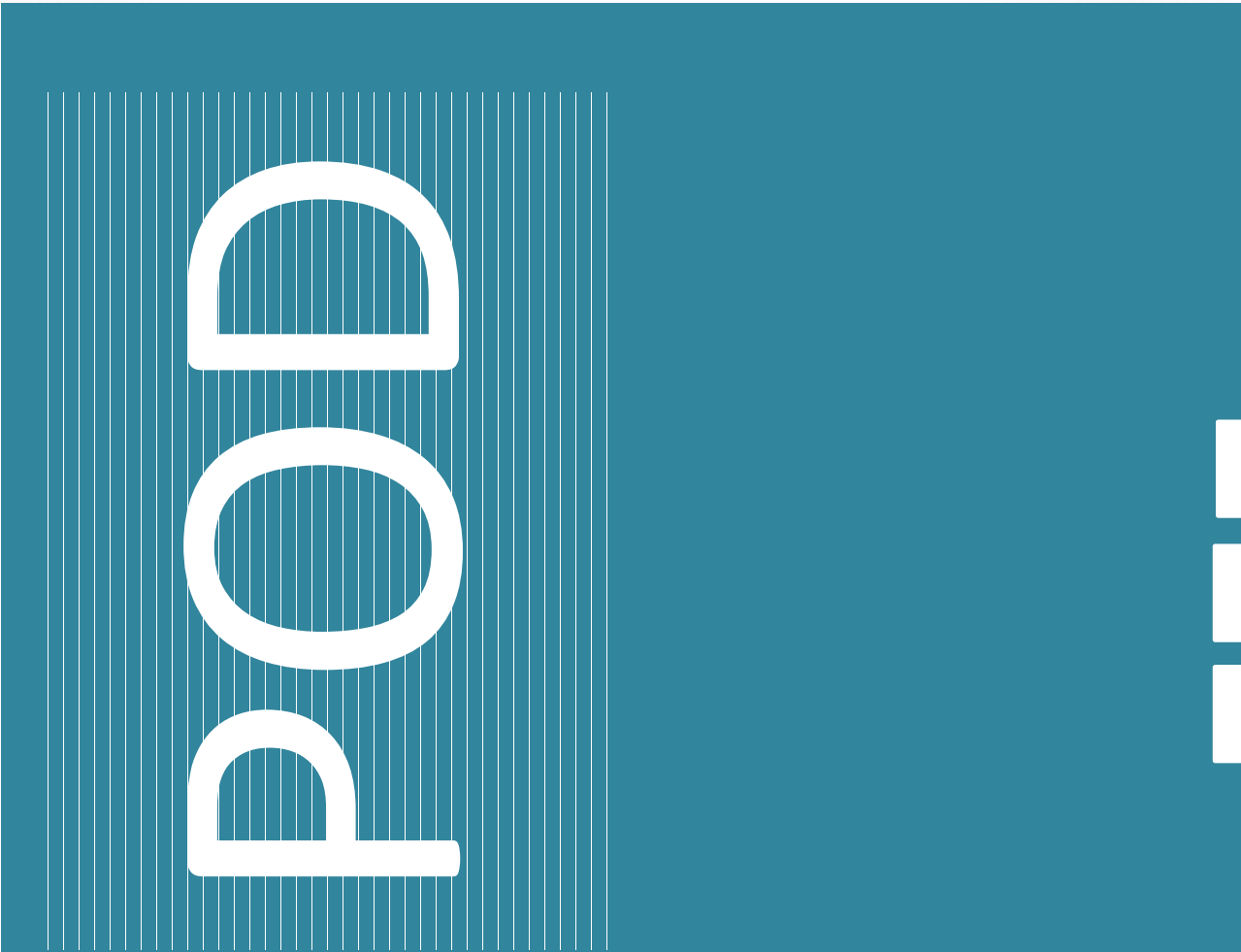
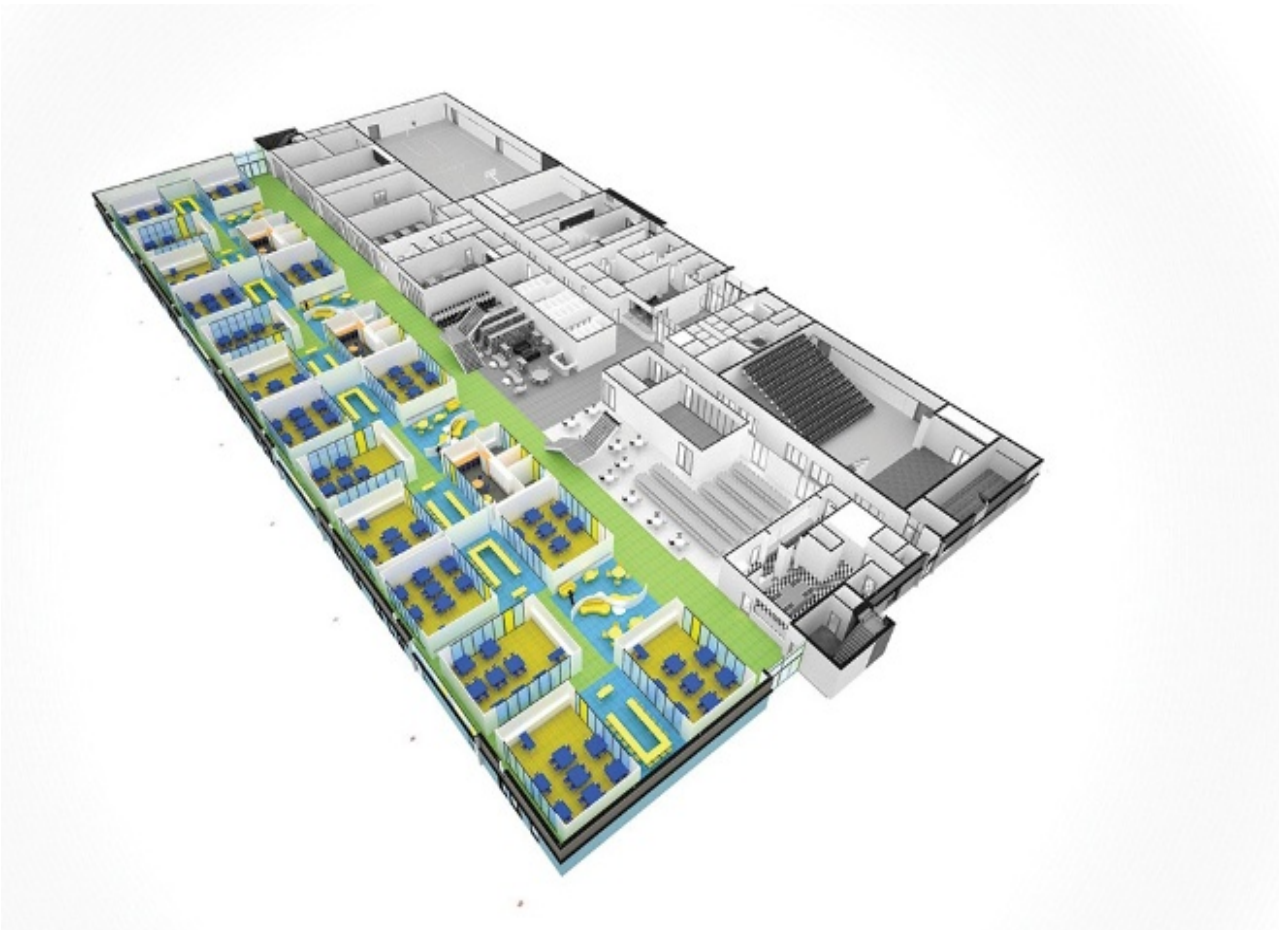
Pod Panel System

Workspace redefined





EDUCATION





Pod Panel System

Workspace redefined

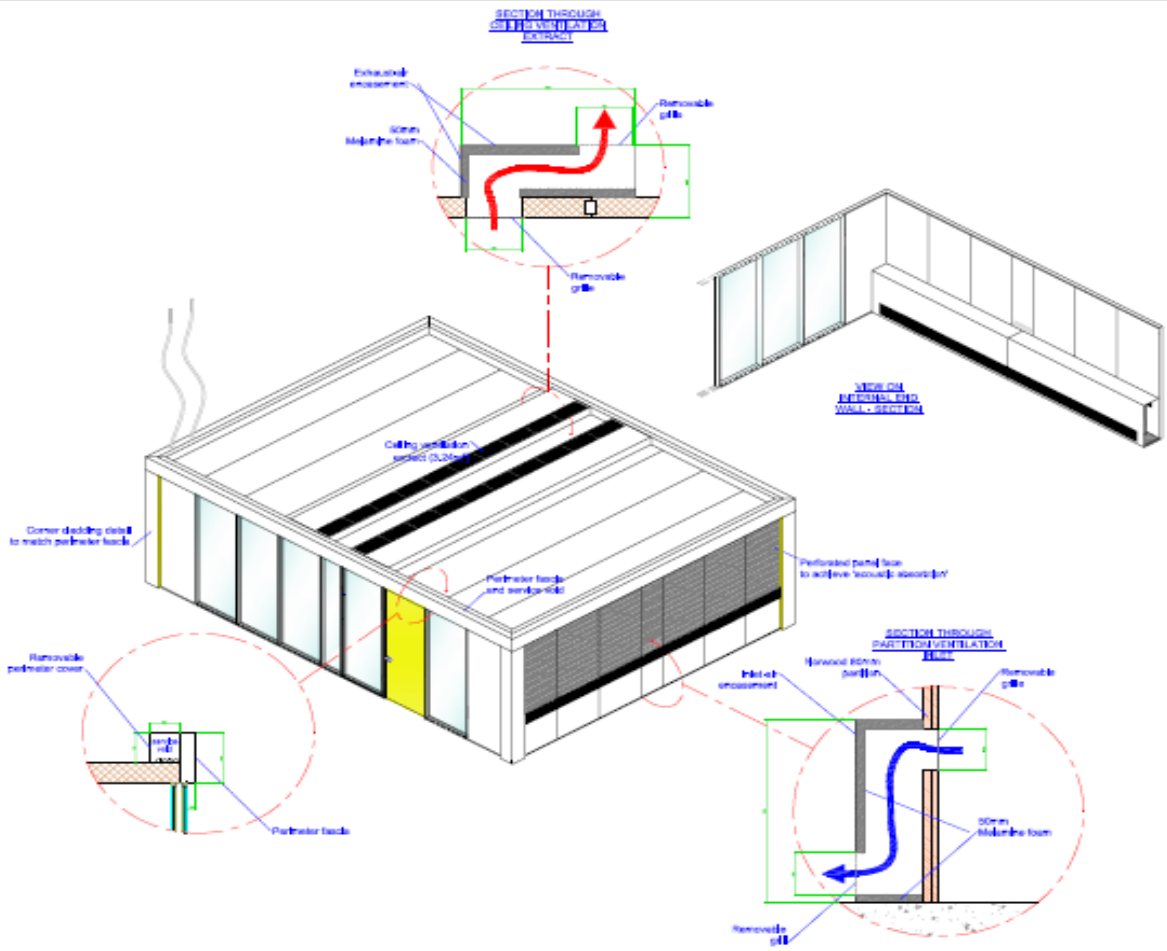




Pod Panel System

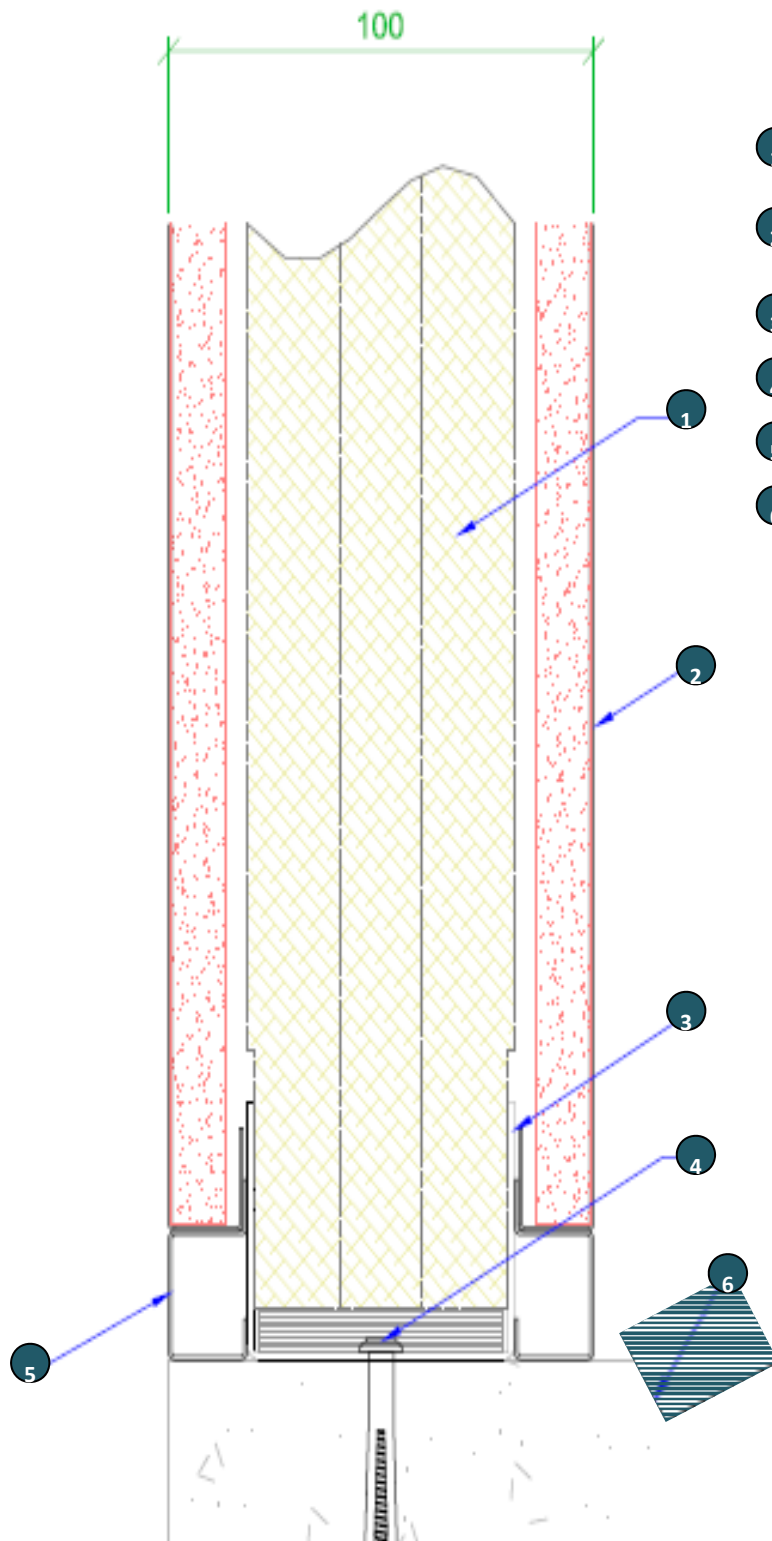
Workspace redefined





DOOR

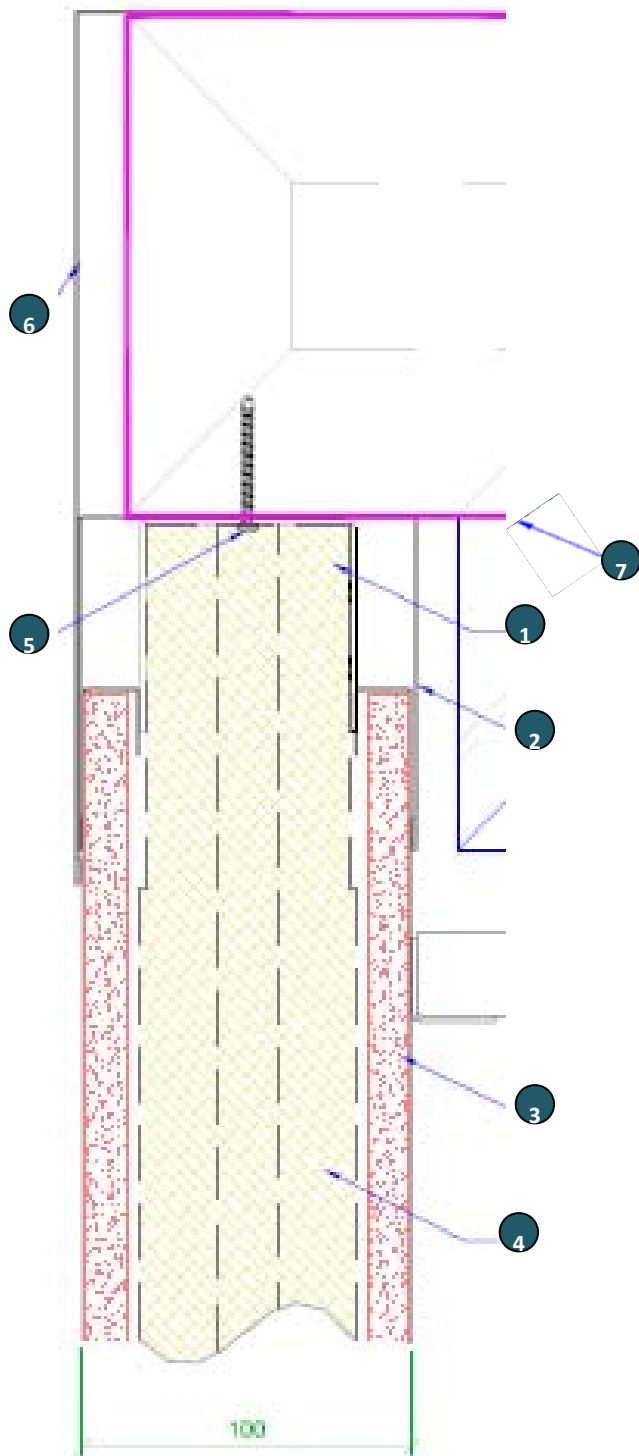
PODSOLVE DETAILS



Floor Track / Stud Section Details

1. 1.2mm stud work c/w rock wool infill
2. Solid Panel skin with 12.5mm plaster board bonded to inside face
3. Inner Floor Track
4. 6 x 40 Hammer fixing @ 300 ctrs
5. Floor Track outer cover detail
6. Concrete plinth (by others)

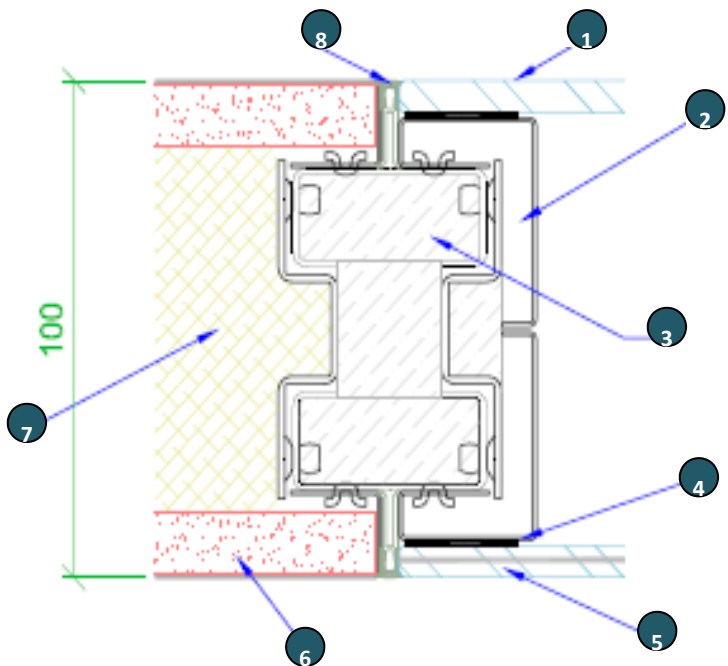
PODSOLVE DETAILS



Head Track / Ceiling Section Detail

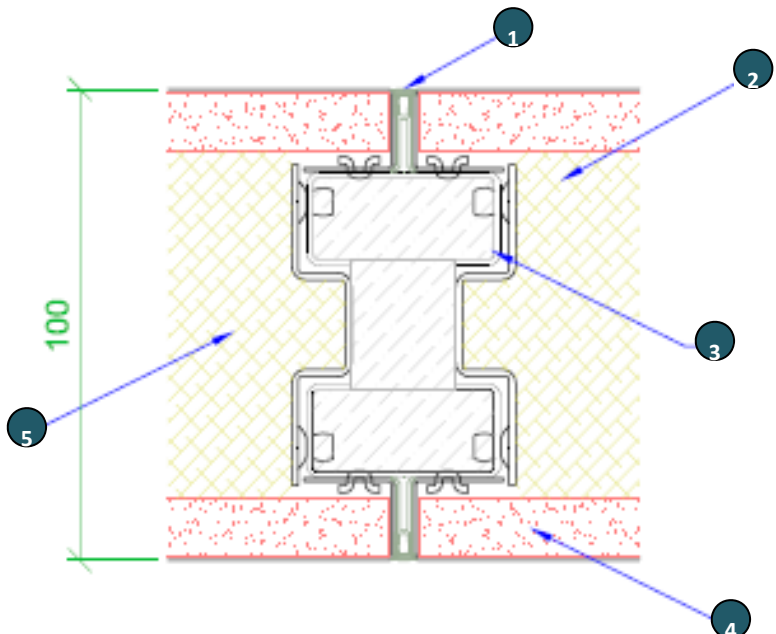
- 1 Head track inner
- 2 Head track outer cover
- 3 Solid panel skin with 12.5mm plasterboard bonded to inside face
- 4 1.2mm Studwork c/w rock wool infill
- 5 40 x 40 SDST screw fixing @ 300 ctrs
- 6 Ceiling flashing details
- 7 150mm Walk on plank ceiling

PODSOLVE DETAILS



Solid / Glazed Section Details

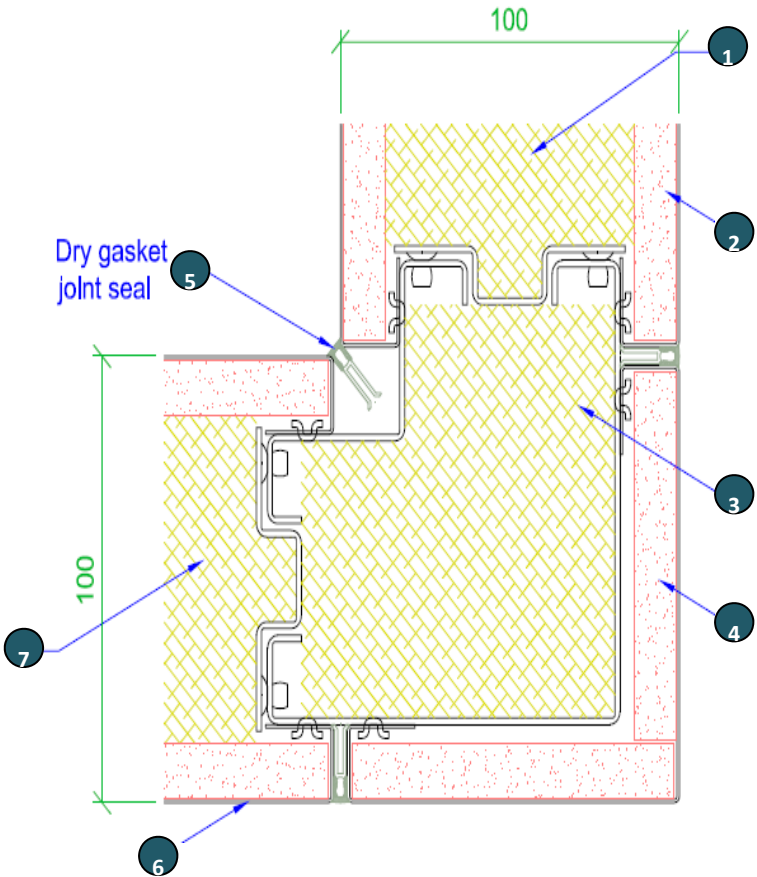
- 1 6mm CFT Glass
- 2 Norwood glazing frame
- 3 1.2mm Studwork c/w rock wool infill
- 4 Norwood glazing frame
- 5 6.4mm Laminated glass
- 6 Solid panel skin with 12.5mm plaster board bonded to inside face
- 7 Rockwool panel infill
- 8 Dry Gasket joint seal



Solid / Glazed Section Details

- 1 Dry gasket joint seal
- 2 Rockwool panel infill
- 3 1.2mm Studwork c/w rock wool infill
- 4 Solid panel skin with 12.5mm plaster board bonded to inside face
- 5 Rockwool panel infill

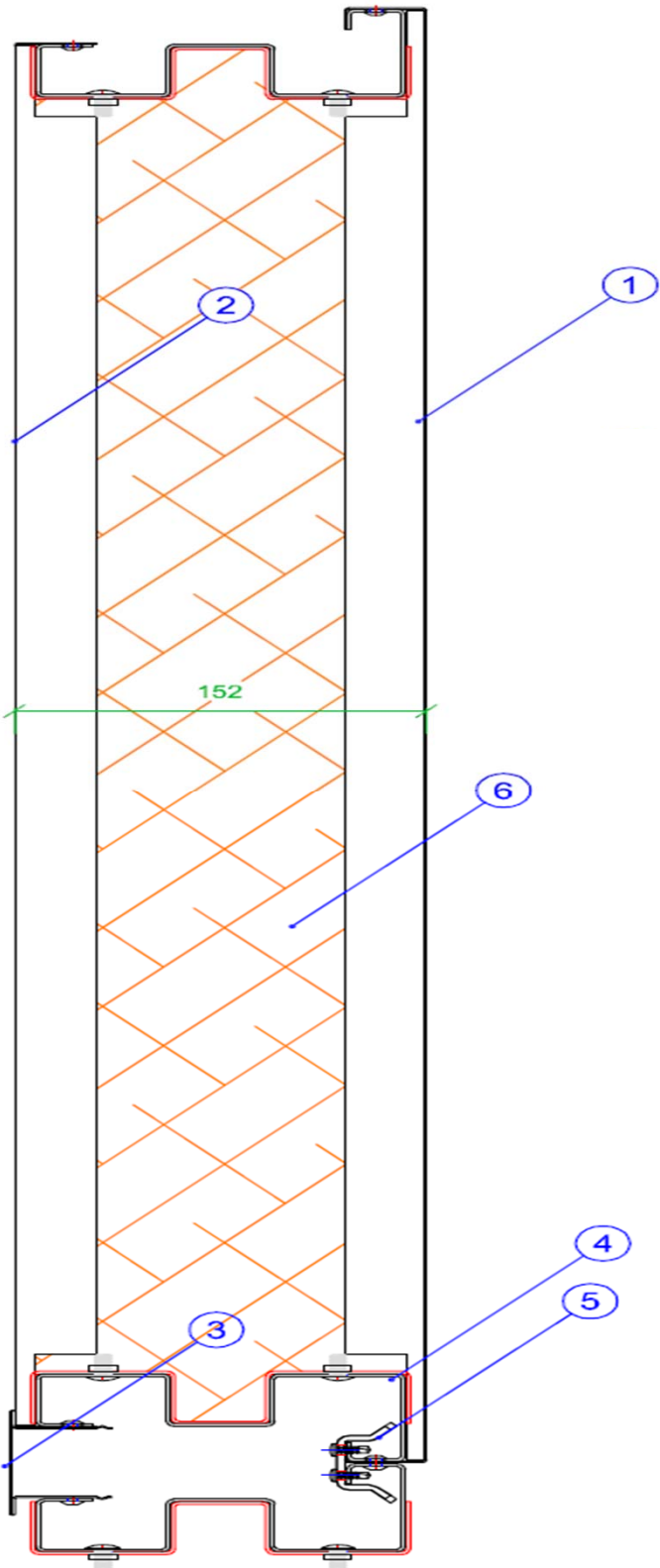
PODSOLVE DETAILS



Solid / Solid Corner Section Details

- 1 Rockwool panel infill
- 2 Solid panel skin with 12.5mm plaster board bonded to inside face
- 3 1.2mm Corner stud c/w rock wool infill
- 4 Solid panel skin with 12.5mm plaster board bonded to inside face
- 5 Dry Gasket joint seal
- 6 Solid panel skin with 12.5mm plaster board bonded to inside face
- 7 Rockwool panel infill

PODSOLVE DETAILS



Walk on Ceiling Detail

- 1 Bottom Panel Skin – E.Z. vinyl coated steel
- 2 Top Panel Skin – E.Z. vinyl coated steel
- 3 Ceiling Joint Cover Channel
- 4 Ceiling Panel Side Rail
- 5 Ceiling Panel Connecting Channel
- 6 Honeycomb Paper Core

Pink Zone, Plot # 9094, PIN # 81050411, New Industrial Area, Doha, Qatar.

POD

PodSolve Solution

Workspace redefined



NORWOOD QATAR LLC
Steel Solution