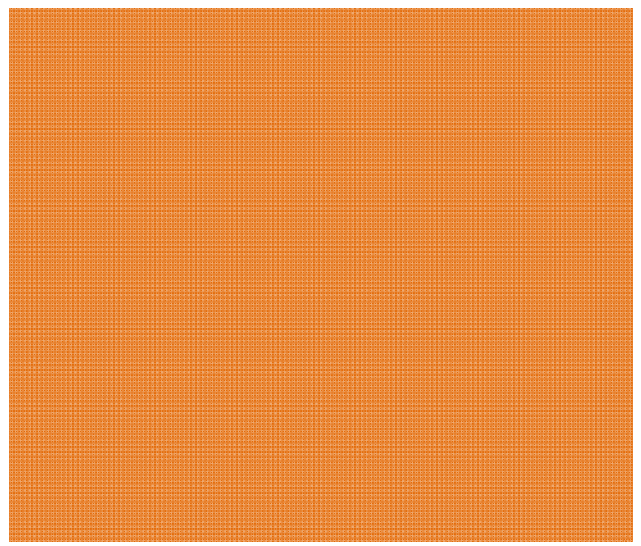
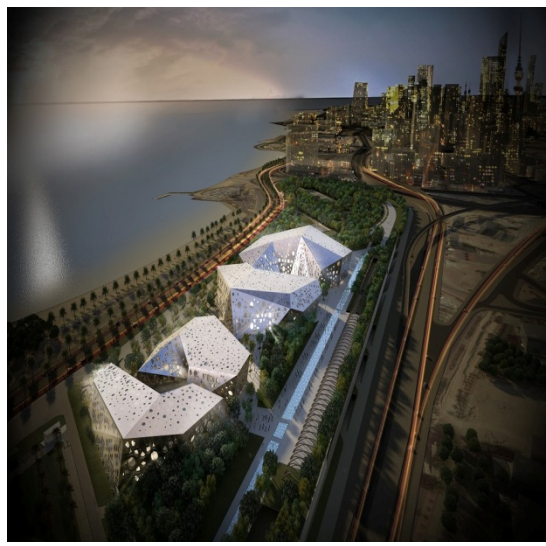




# Façade Solution



NORWOOD QATAR LLC  
Steel Solution

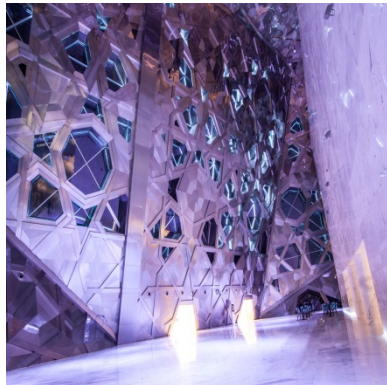


## Façade Solution

### Produces façade & cassette solutions

The company produces facade solutions using its cutting- edge Qatari manufacturing facility. All facades are manufactured & delivered direct to site, pre-configured to minimise disruption. Norwood's designers use their specialist skills to produce world class results. We believe that the high quality product and service is the cornerstone to building relationship with our clients.

Facade cassettes are manufactured from 1.2mm zinc coated galvanized steel with the punched holes for Tech bolt fixation incorporating the top & bottom structure complete with internal vertical & horizontal support structure forming a unique and robust system which has the flexibility to allow each system to be custom built to exact project specifications.



We turn shell constructions into key-ready buildings - from the outside and the inside. (Photo left & right: Cultural Center; middle: Commercial Tower, Qatar)

## Construction

### FACADE ELEMENTS

#### STEEL

Thickness:

1.2mm galvanized steel / SS. steel

Standard:

ASTM A653: 2008

Steel Grade:

L. F. Q.,

Bend Test:

OK

Hardness:

55

Zinc Coat:

(g/m<sup>2</sup>): 279,

EL %:

40,

YS N/mm<sup>2</sup>:

254

Coating Spec:

G90 (275g/m<sup>2</sup>)

Coating has a unique metallurgical structure which gives outstanding resistance to mechanical damage, erection and service.

Corrosion resistance:

Galvanized steel is resistant to corrosion up to 100 times better than uncoated steel.

#### SCREW

Type:

Self-Drilling

Manufacturer:

EJOT

Screw specs:

JT2-6-5.5 C1000

Carbon steel self drilling screw

#### Features:

Case: hardened steel

C1000-high grade coating to improve the corrosion protection (15 Kesternich cycles)

Steel grade:

High quality grade case hardened carbon steel to Din standard 7504.

Steel classification:

Steel Classified as SAE 1018 SGZ. carbon steel electroplated with zinc clear dichromate passivation for a corrosion resistant finish.

Washer:

Stainless steel sealing washer

Pre-assembled sealing washer

## Geometrical features

### DIMENSIONS

#### SCREW

JT2-6-5.5 C1000

Length:

25mm

Clamping Thickness:

3-10mm

Drilling capacity t. t.:

1.5mm to 5.0mm

Approval:

ETA-10/0200

Drive:

Hexagon A/F8mm

#### NUT & BOLTS

8 mm X 21 mm -Bolt

8 mm -Nuts

13mm -Head

#### DURABILITY

High performance facades are extremely durable and resistant to scratches from abrasion.

The Integrated façade solutions are manufactured from 1.2mm zinc coated galvanized steel with pre-punched holes for Tech bolt fixation incorporating the top & bottom structure complete with internal vertical & horizontal support structure forming a unique and robust system with load bearing properties and flexibility to allow each system to be custom built to exact project specifications.

## Load

### CASSETTES

Date: 19<sup>th</sup> Jan. 2015

Report No:

WB-15Q-30123

Document No.:

NQ.QF/DC-LCC-02 (REV-0)

Load Test Description:

A Load is applied at the top of an item of cassette holding an ID Number "Ceiling Cassette"

Test Result:

The Cassette is safe for its intended use with in the specified limits

#### SCREW

Characteristic tension resistance:

annex-15-16, ETA-100200

Characteristic shear resistance:

annex-15-16, ETA-100200

Fastener type:

annex-15-16, ETA-100200

Limits of the application:

annex-15-16, ETA 100200

Corrosion protection test

15 Kesternich cycles

DIN 50018, 1997, 1000 h salt spray

test. DIN EN ISO 9227 – NSS

## Fire

### SCREW

Reaction to fire:

A1 bis E, ETA-100200

## Approvals:

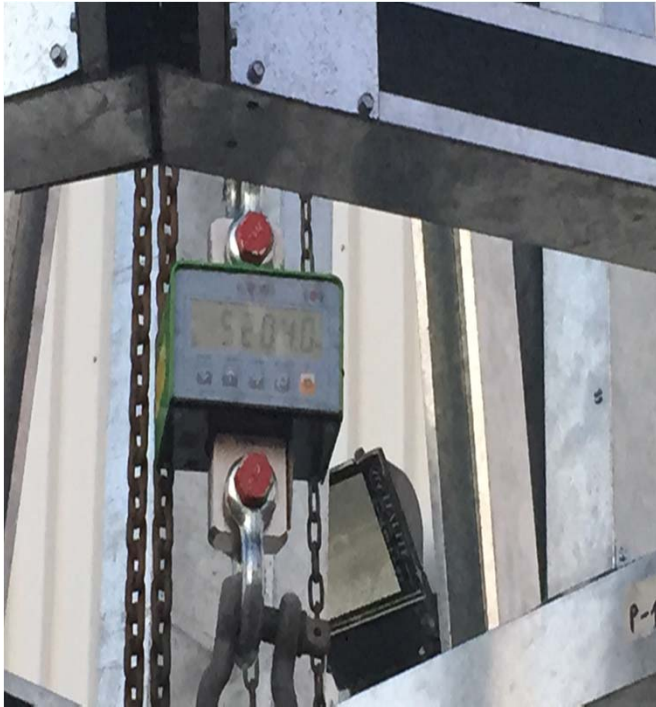
ETA Approved:

ETA-10/0200

## Overview:

The flexibility of the steel construction is designed to allow each cassettes system to be custom built to exact project specifications and can provide varying levels of load bearing and structural stability properties,. All cassettes are manufactured under controlled quality assured procedures at our manufacturing facility in Doha.

# LOAD TEST CERTIFICATE



## Cassette Load Test:

Report No: WB-15Q-30123

Document No.: NQ.QF/DC-LCC-02  
(REV-0)

Date: 19th Jan. 2015

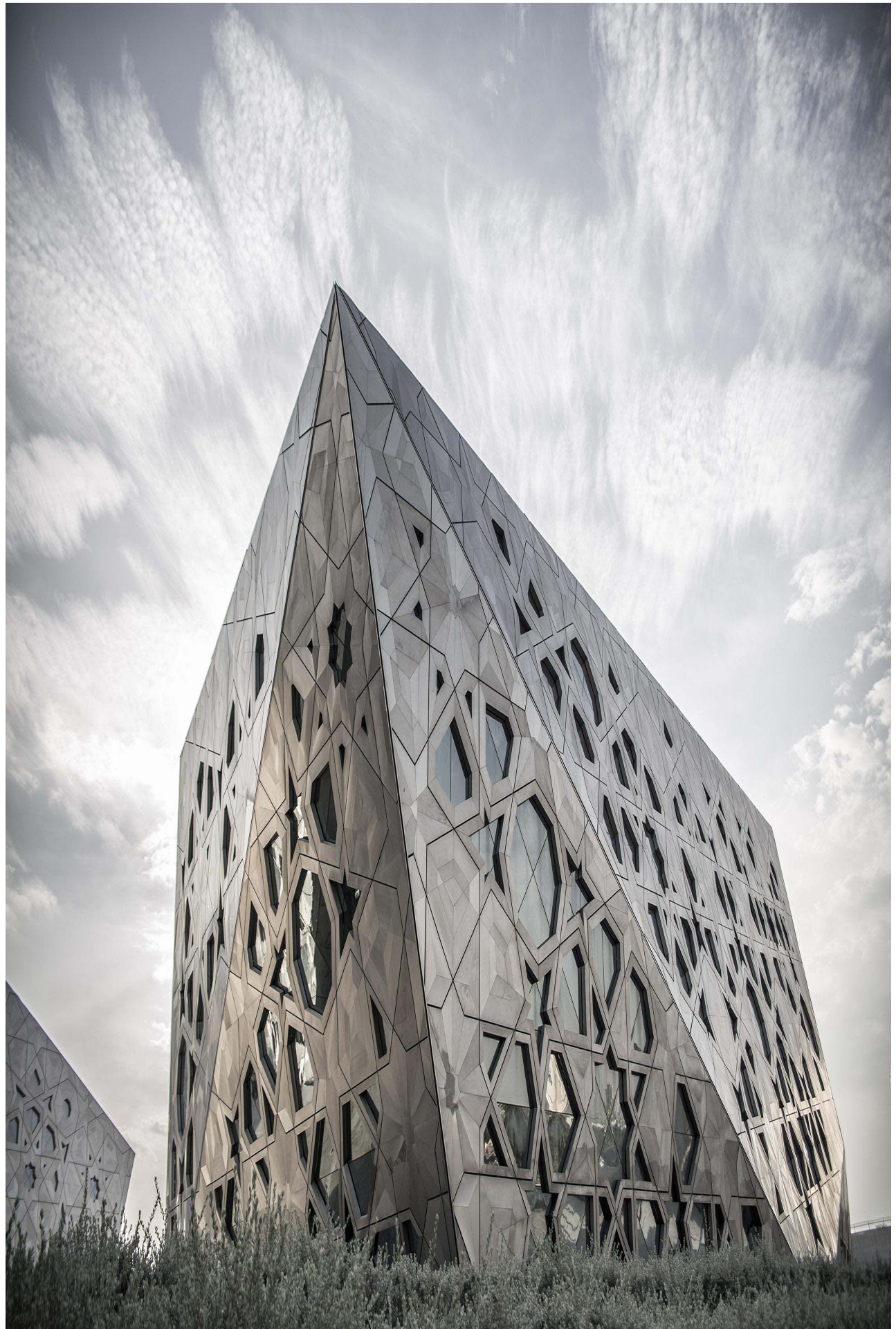
## Load Test Description:

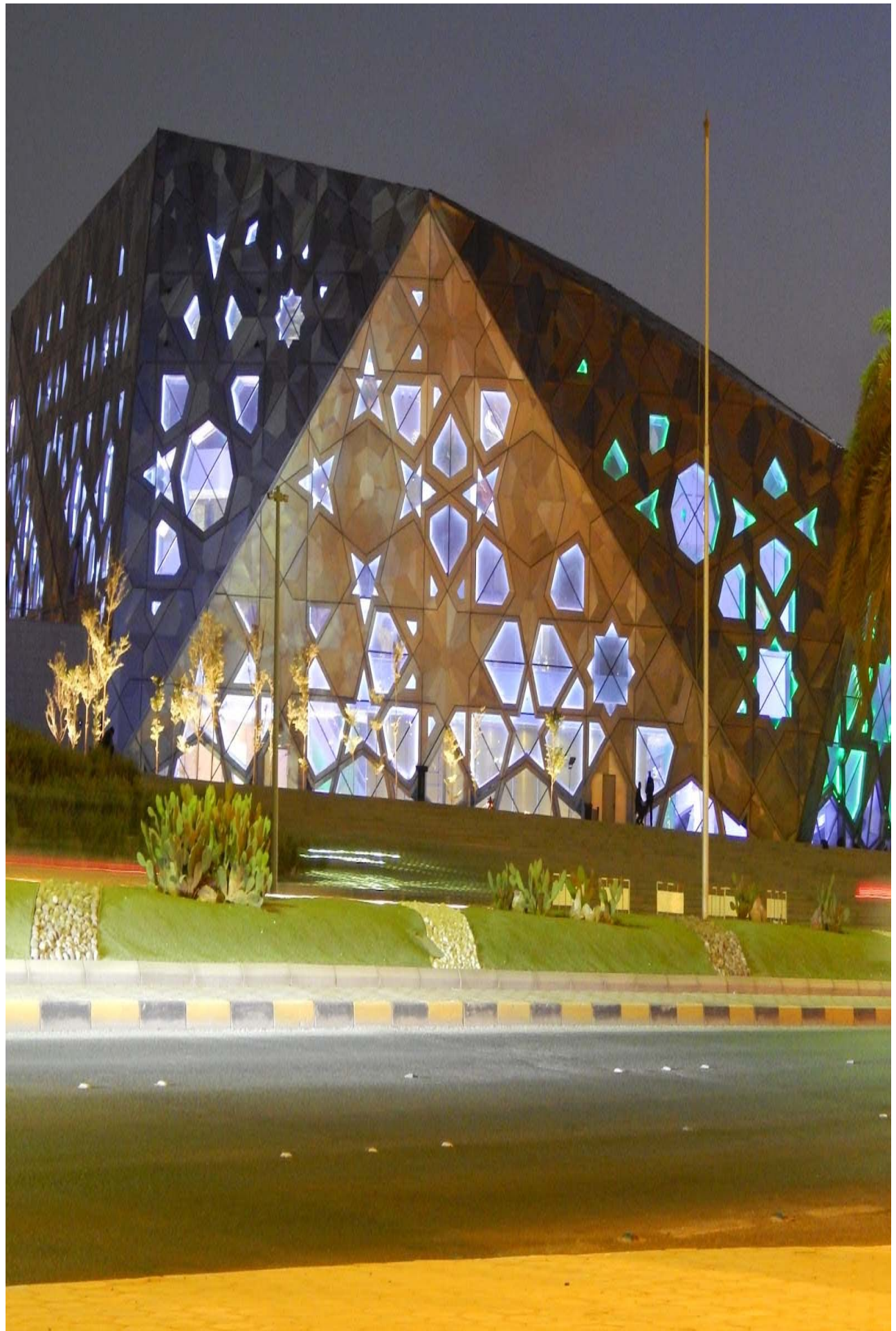
A Load is applied at the top of an item of cassette holding an ID Number "Ceiling Cassette"

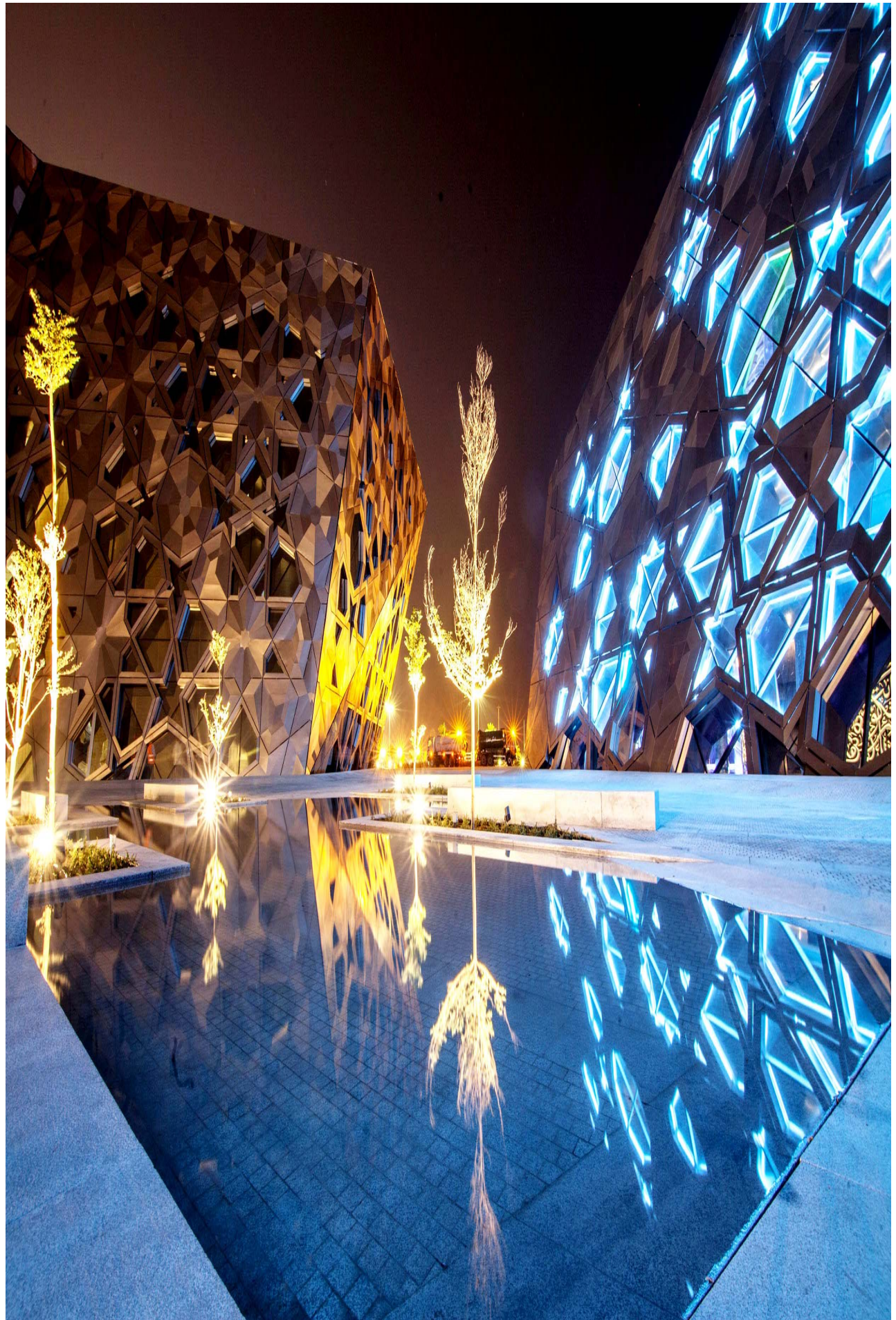
## Test Result:

The Cassette is safe for its intended use with in the specified limits







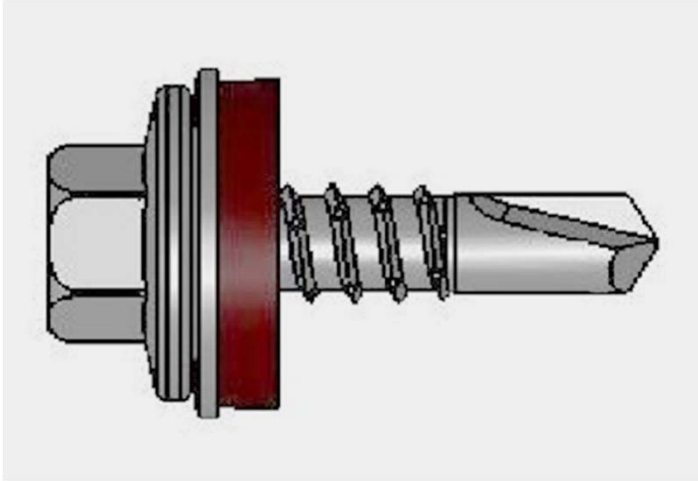








# FAÇADE DETAILS



## Components:

Self-Drilling

JT2-6-6.3 Range

High quality grade case hardened carbon steel to Din standard 7504.

Steel Classified as SAE 1018 SGZ.

Carbon steel electroplated with zinc

Clear dichromate passivation for a

corrosion resistant finish

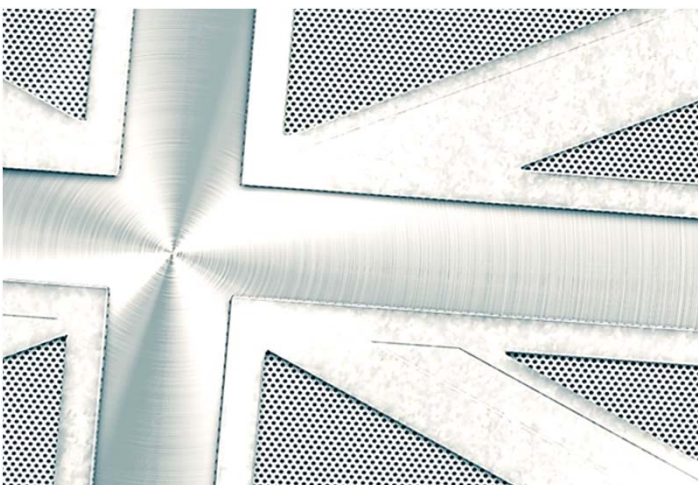


Nuts & Bolts

8 X 21 mm – Bolt

8mm - Nuts

13mm – Head

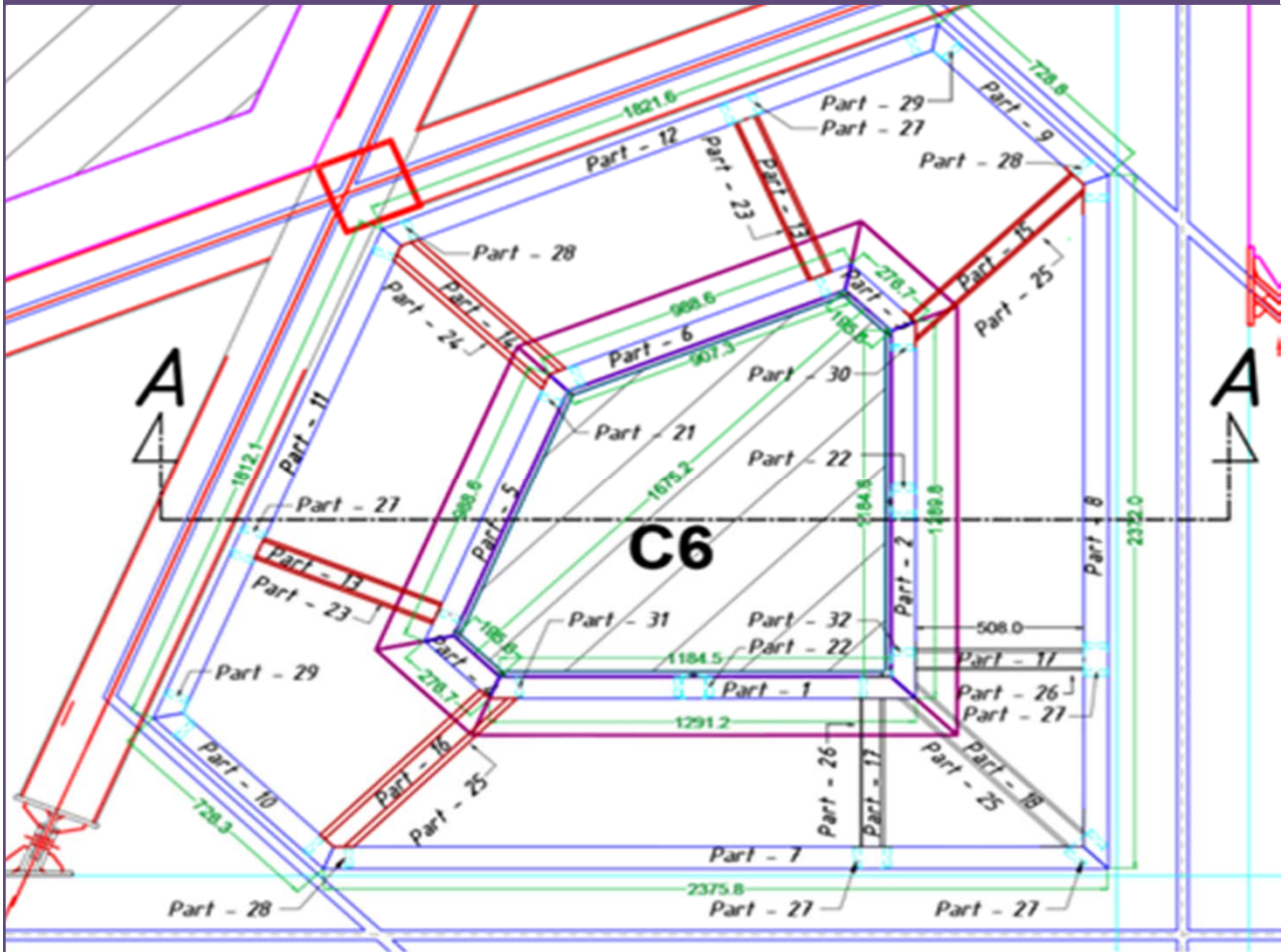


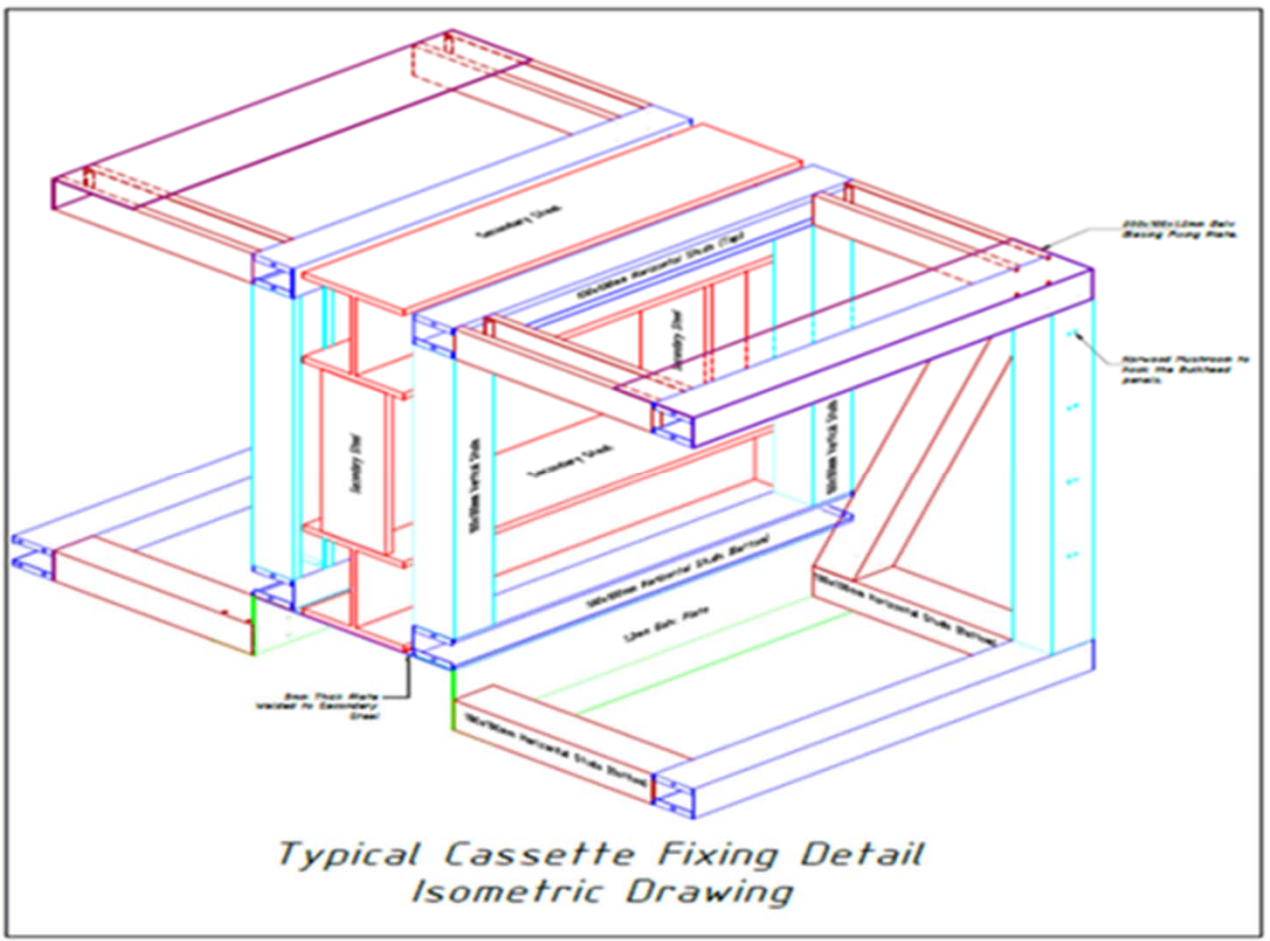
Galvanized Steel

Thickness: 1.2mm

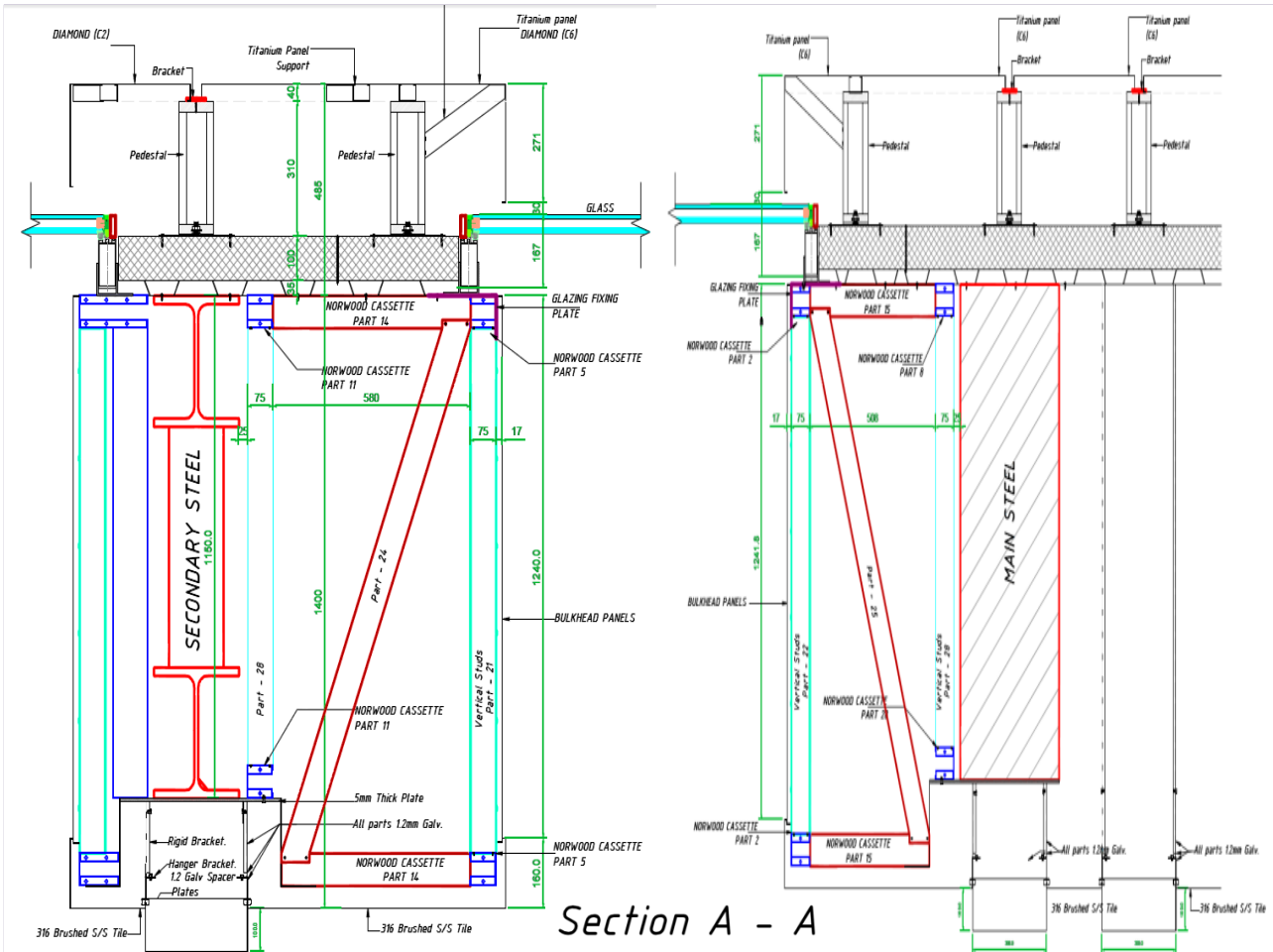
Zinc coated

# Typical Cassette Fixing Details.





# Typical Cassette Fixing Details.



# Typical Cassette Fixing Details.

Pink Zone, Plot # 9094, PIN # 81050411, New Industrial Area, Doha, Qatar.

fa c

ade



NORWOOD QATAR LLC  
Steel Solution